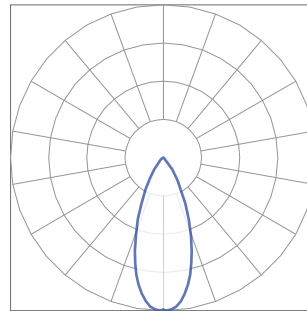
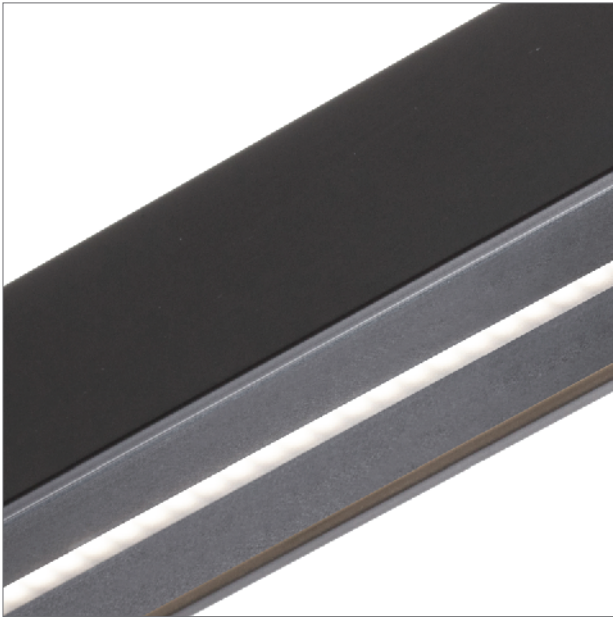


BoxRail® | 107

107-BX-X-4-48-X-X-X-X-X-Z-SO-359-S1-X-BL-X

The performance data in black text is confirmed through third party testing (see the following Light Laboratory report for details). The performance data in grey text is calculated by Vode, for reference only.

Technical Support: (707) 996-9898



Details

Rail Type / Length	BoxRail, 48"
LED Type	Zipper Board
Lumen Output	Standard Output
Color Temperature	3500K, 90+ CRI
Optics	40° Black Symmetric Lens

Performance Summary

	2700K	3000K	3500K	4000K
Color Temperature	2700K	3000K	3500K	4000K
Efficacy - Lumens per Watt	34	35	36	37
Total Lumens, 4' rail (1219mm)	808	833	850	867
Lumens per foot (305mm)	202	208	213	217
Input Power (W), 4' rail (1219mm)	24.1	24.1	24.1	24.1
Watts per foot (305mm)	6.1	6.1	6.1	6.1
CRI	-	-	96	-

© 2017 Vode Lighting LLC. All rights reserved. The Vode logo and Vode, are either registered trademarks or trademarks of Vode Lighting LLC in the United States and/or other countries. All other brand or product names are trademarks or registered trademarks of their respective owners. No part of the above drawing, design, arrangements or ideas thereon shall be duplicated or used for any purpose whatsoever without the express permission of Vode Lighting LLC. Due to ongoing innovation, specifications may change without notice.



IES INDOOR REPORT
PHOTOMETRIC FILENAME : VODE_107_BX_SO_359_S1-BL.IES

DESCRIPTION INFORMATION (From Photometric File)

IESNA:LM-63-2002
[TEST] L071704211 (SOURCE REPORT FOR REFERENCE)
[TESTLAB] REPORT BASED ON DATA PRODUCED BY NVLAP ACCREDITED LAB
[ISSUEDATE] 11/1/2017
[MANUFAC] Vode Lighting
[LUMCAT] 107-BX-48-Z-SO-359-S1-BL
[LUMINAIRE] BoxRail LED, 48", 3500K, 90 CRI, zipper board,
[MORE] 40° black symmetric lens, standard output
[TEST PROCEDURE] IESNA:LM-79-08

CHARACTERISTICS

Lumens Per Lamp	N.A. (absolute)
Total Lamp Lumens	N.A. (absolute)
Luminaire Lumens	850
Total Luminaire Efficiency	N.A.
Luminaire Efficacy Rating (LER)	35
Total Luminaire Watts	24.06
Ballast Factor	1.00
CIE Type	Direct
Spacing Criterion (0-180)	0.66
Spacing Criterion (90-270)	1.16
Spacing Criterion (Diagonal)	0.82
Basic Luminous Shape	Rectangular
Luminous Length (0-180)	0.02 ft
Luminous Width (90-270)	3.83 ft
Luminous Height	0.00 ft

LUMINANCE DATA (cd/sq.m)

Angle In Degrees	Average 0-Deg	Average 45-Deg	Average 90-Deg
45	6683	16505	67538
55	2996	7240	36949
65	2033	4066	18636
75	1107	2766	10512
85	0	0	4929

IES INDOOR REPORT
PHOTOMETRIC FILENAME : VODE_107_BX_SO_359_S1-BL.IES

CANDELA TABULATION

	<u>0</u>	<u>5</u>	<u>10</u>	<u>15</u>	<u>20</u>	<u>25</u>	<u>30</u>	<u>35</u>	<u>40</u>	<u>45</u>
0.0	860.88	860.88	860.88	860.88	860.88	860.88	860.88	860.88	860.88	860.88
1.0	864.96	864.96	864.96	864.96	867.00	867.00	865.98	865.98	864.96	864.96
3.0	861.90	861.90	861.90	861.90	861.90	860.88	860.88	860.88	860.88	860.88
5.0	849.66	849.66	849.66	849.66	847.62	848.64	848.64	849.66	850.68	852.72
7.0	821.10	821.10	822.12	823.14	819.06	821.10	824.16	827.22	830.28	834.36
9.0	783.36	783.36	785.40	787.44	781.32	785.40	792.54	797.64	803.76	810.90
11.0	734.40	734.40	737.46	740.52	733.38	743.58	751.74	760.92	770.10	780.30
13.0	675.24	676.26	680.34	688.50	681.36	691.56	704.82	717.06	731.34	745.62
15.0	610.98	612.00	616.08	618.12	617.10	630.36	649.74	666.06	684.42	702.78
17.0	541.62	543.66	548.76	547.74	552.84	572.22	589.56	608.94	631.38	654.84
19.5	444.72	450.84	462.06	471.24	467.16	486.54	506.94	535.50	563.04	591.60
22.5	355.98	358.02	367.20	368.22	377.40	396.78	419.22	446.76	479.40	513.06
25.5	268.26	270.30	276.42	278.46	289.68	310.08	333.54	362.10	394.74	432.48
29.0	190.74	194.82	196.86	205.02	207.06	224.40	245.82	272.34	304.98	341.70
33.0	120.36	123.42	126.48	129.54	135.66	149.94	166.26	188.70	216.24	247.86
37.5	71.40	73.44	76.50	76.50	82.62	92.82	105.06	120.36	142.80	168.30
42.5	42.84	42.84	43.86	45.90	45.90	52.02	59.16	70.38	84.66	103.02
47.5	24.48	24.48	25.50	27.54	27.54	31.62	36.72	42.84	51.00	63.24
55.0	12.24	12.24	12.24	13.26	13.26	15.30	17.34	20.40	24.48	29.58
65.0	6.12	6.12	6.12	6.12	6.12	7.14	7.14	8.16	10.20	12.24
75.0	2.04	2.04	3.06	3.06	3.06	3.06	3.06	4.08	4.08	5.10
85.0	0.00	0.00	0.00	0.00	0.00	0.00	0.00	0.00	0.00	0.00
90.0	0.00	0.00	0.00	0.00	0.00	0.00	0.00	0.00	0.00	0.00

Vert. Angles **Horizontal Angles**

	<u>50</u>	<u>55</u>	<u>60</u>	<u>65</u>	<u>70</u>	<u>75</u>	<u>80</u>	<u>85</u>	<u>90</u>
0.0	860.88	860.88	860.88	860.88	860.88	860.88	860.88	860.88	860.88
1.0	864.96	867.00	865.98	865.98	865.98	865.98	865.98	865.98	865.98
3.0	860.88	860.88	861.90	861.90	862.92	862.92	862.92	862.92	862.92
5.0	853.74	854.76	856.80	857.82	858.84	859.86	860.88	861.90	861.90
7.0	838.44	841.50	845.58	847.62	852.72	854.76	856.80	857.82	857.82
9.0	818.04	824.16	830.28	835.38	840.48	844.56	848.64	850.68	852.72
11.0	791.52	800.70	810.90	819.06	827.22	833.34	838.44	841.50	844.56
13.0	759.90	774.18	790.50	801.72	812.94	822.12	828.24	832.32	834.36
15.0	723.18	742.56	759.90	776.22	794.58	807.84	817.02	822.12	823.14
17.0	681.36	705.84	727.26	751.74	771.12	786.42	798.66	805.80	808.86
19.5	622.20	659.94	690.54	714.00	740.52	760.92	778.26	787.44	793.56
22.5	551.82	588.54	626.28	659.94	690.54	718.08	738.48	750.72	754.80
25.5	474.30	517.14	555.90	598.74	642.60	676.26	700.74	716.04	721.14
29.0	386.58	433.50	481.44	527.34	576.30	616.08	646.68	666.06	672.18
33.0	289.68	334.56	384.54	432.48	483.48	534.48	570.18	592.62	599.76
37.5	200.94	241.74	287.64	332.52	383.52	426.36	470.22	496.74	506.94
42.5	126.48	158.10	195.84	233.58	280.50	325.38	363.12	384.54	395.76
47.5	78.54	99.96	125.46	155.04	189.72	226.44	256.02	276.42	284.58
55.0	37.74	47.94	61.20	77.52	95.88	115.26	133.62	146.88	150.96
65.0	15.30	18.36	23.46	28.56	35.70	42.84	49.98	55.08	56.10
75.0	6.12	7.14	9.18	10.20	12.24	15.30	17.34	18.36	19.38
85.0	0.00	1.02	1.02	2.04	2.04	3.06	3.06	3.06	3.06
90.0	0.00	0.00	0.00	0.00	0.00	0.00	0.00	0.00	0.00

IES INDOOR REPORT
PHOTOMETRIC FILENAME : VODE_107_BX_SO_359_S1-BL.IES

ZONAL LUMEN SUMMARY

Zone	Lumens	%Lamp	%Fixt
0-20	265.17	N.A.	31.20
0-30	473.58	N.A.	55.70
0-40	626.94	N.A.	73.70
0-60	796.09	N.A.	93.60
0-80	845.51	N.A.	99.40
0-90	850.38	N.A.	100.00
10-90	785.27	N.A.	92.30
20-40	361.76	N.A.	42.50
20-50	480.21	N.A.	56.50
40-70	204.08	N.A.	24.00
60-80	49.42	N.A.	5.80
70-80	14.49	N.A.	1.70
80-90	4.87	N.A.	0.60
90-110	0.00	N.A.	0.00
90-120	0.00	N.A.	0.00
90-130	0.00	N.A.	0.00
90-150	0.00	N.A.	0.00
90-180	0.00	N.A.	0.00
110-180	0.00	N.A.	0.00
0-180	850.38	N.A.	100.00

Total Luminaire Efficiency = N.A.%

ZONAL LUMEN SUMMARY

Zone	Lumens
0-10	65.11
10-20	200.06
20-30	208.41
30-40	153.36
40-50	118.44
50-60	50.71
60-70	34.92
70-80	14.49
80-90	4.87
90-100	0.00
100-110	0.00
110-120	0.00
120-130	0.00
130-140	0.00
140-150	0.00
150-160	0.00
160-170	0.00
170-180	0.00

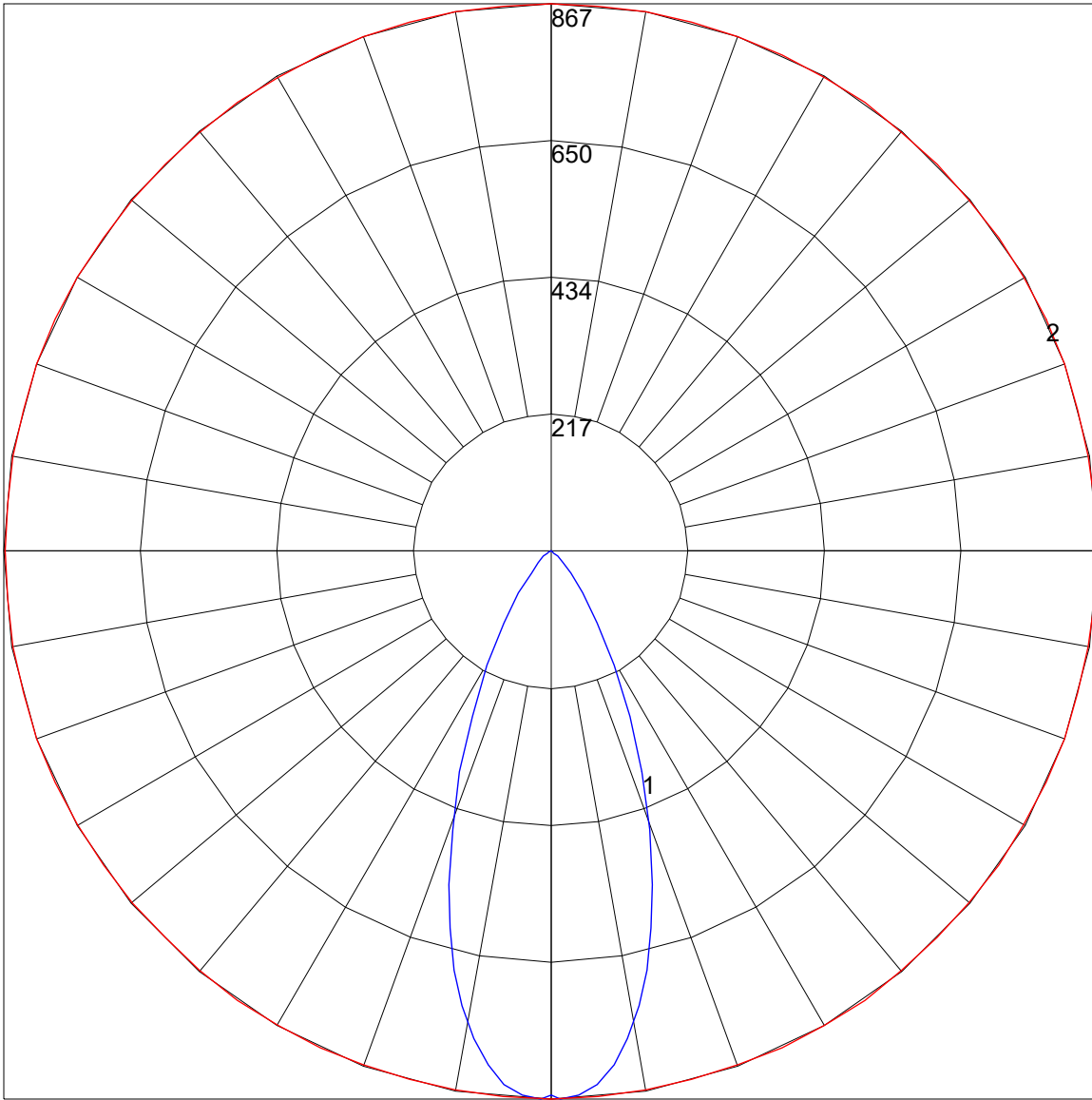
IES INDOOR REPORT
PHOTOMETRIC FILENAME : VODE_107_BX_SO_359_S1-BL.IES

COEFFICIENTS OF UTILIZATION - ZONAL CAVITY METHOD

Effective Floor Cavity Reflectance 0.20

RC	80				70				50			30			10			0
RW	70	50	30	10	70	50	30	10	50	30	10	50	30	10	50	30	10	0
0	119	119	119	119	116	116	116	116	111	111	111	106	106	106	102	102	102	100
1	112	109	106	103	110	106	104	101	102	100	98	99	97	95	95	94	92	91
2	105	99	94	90	103	97	93	89	94	90	87	91	88	85	88	86	83	82
3	98	91	85	80	96	89	84	79	87	82	78	84	80	77	82	78	75	74
4	92	83	77	72	90	82	76	71	80	75	70	78	73	70	76	72	69	67
5	87	77	70	65	85	76	70	65	74	68	64	72	67	63	71	66	63	61
6	82	71	64	59	80	71	64	59	69	63	59	67	62	58	66	61	58	56
7	77	66	59	55	76	66	59	54	64	58	54	63	58	54	62	57	53	52
8	73	62	55	50	72	61	55	50	60	54	50	59	54	50	58	53	50	48
9	69	58	51	47	68	58	51	47	57	51	47	56	50	46	55	50	46	45
10	65	55	48	44	64	54	48	44	53	47	43	52	47	43	52	47	43	42

POLAR GRAPH



Maximum Candela = 867 Located At Horizontal Angle = 20, Vertical Angle = 1
1 - Vertical Plane Through Horizontal Angles (20 - 200) (Through Max. Cd.)
2 - Horizontal Cone Through Vertical Angle (1) (Through Max. Cd.)