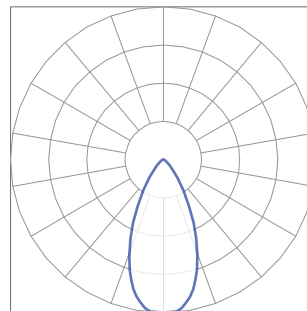
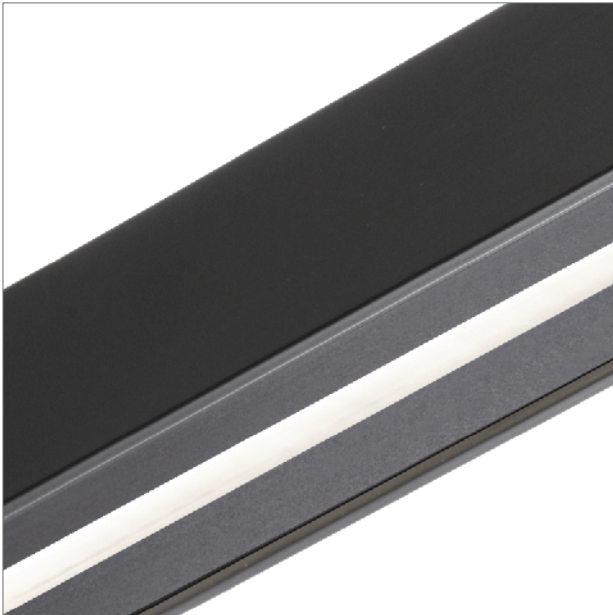


BoxRail® | 107

107-BX-X-4-48-X-X-X-X-X-Z-LO-35-S2-X-BL-X

The performance data in black text is confirmed through third party testing (see the following Light Laboratory report for details). The performance data in grey text is calculated by Vode, for reference only.

Technical Support: (707) 996-9898



Details

Rail Type / Length	BoxRail, 48"
LED Type	Zipper Board
Lumen Output	Low Output
Color Temperature	3500K, 80+ CRI
Optics	60° Black Symmetric Lens

Performance Summary

	2700K	3000K	3500K	4000K
Color Temperature	2700K	3000K	3500K	4000K
Efficacy - Lumens per Watt	39	40	41	41
Total Lumens, 4' rail (1219mm)	569	587	599	611
Lumens per foot (305mm)	142	147	150	153
Input Power (W), 4' rail (1219mm)	15.0	15.0	15.0	15.0
Watts per foot (305mm)	3.8	3.8	3.8	3.8
CRI	-	-	85	-

© 2017 Vode Lighting LLC. All rights reserved. The Vode logo and Vode, are either registered trademarks or trademarks of Vode Lighting LLC in the United States and/or other countries. All other brand or product names are trademarks or registered trademarks of their respective owners. No part of the above drawing, design, arrangements or ideas thereon shall be duplicated or used for any purpose whatsoever without the express permission of Vode Lighting LLC. Due to ongoing innovation, specifications may change without notice.



IES INDOOR REPORT
PHOTOMETRIC FILENAME : VODE_107_BX_LO_35_S2-BL.IES

DESCRIPTION INFORMATION (From Photometric File)

IESNA:LM-63-2002
[TEST] L071704212 (SOURCE REPORT FOR REFERENCE)
[TESTLAB] REPORT BASED ON DATA PRODUCED BY NVLAP ACCREDITED LAB
[ISSUEDATE] 11/1/2017
[MANUFAC] Vode Lighting
[LUMCAT] 107-BX-48-Z-LO-35-S2-BL
[LUMINAIRE] BoxRail LED, 48", 3500K, 80 CRI, zipper board,
[MORE] 60° black symmetric lens, low output
[TEST PROCEDURE] IESNA:LM-79-08

CHARACTERISTICS

Lumens Per Lamp	N.A. (absolute)
Total Lamp Lumens	N.A. (absolute)
Luminaire Lumens	598
Total Luminaire Efficiency	N.A.
Luminaire Efficacy Rating (LER)	40
Total Luminaire Watts	14.95
Ballast Factor	1.00
CIE Type	Direct
Spacing Criterion (0-180)	0.78
Spacing Criterion (90-270)	1.14
Spacing Criterion (Diagonal)	0.88
Basic Luminous Shape	Rectangular
Luminous Length (0-180)	0.02 ft
Luminous Width (90-270)	3.83 ft
Luminous Height	0.00 ft

LUMINANCE DATA (cd/sq.m)

Angle In Degrees	Average 0-Deg	Average 45-Deg	Average 90-Deg
45	7555	15052	41116
55	3755	7365	22817
65	2156	4312	11956
75	1600	2880	6721
85	0	950	3801

IES INDOOR REPORT
PHOTOMETRIC FILENAME : VODE_107_BX_LO_35_S2-BL.IES

CANDELA TABULATION

	0	5	10	15	20	25	30	35	40	45
0.0	538.67	538.67	538.67	538.67	538.67	538.67	538.67	538.67	538.67	538.67
1.0	536.90	536.31	536.31	536.90	537.49	537.49	538.08	538.08	538.08	538.08
3.0	536.31	536.31	535.72	534.54	534.54	535.13	536.31	536.31	536.90	536.90
5.0	536.31	535.13	532.18	529.82	528.64	530.41	531.00	531.59	532.18	532.77
7.0	527.46	526.87	523.33	518.61	516.84	518.02	519.79	520.97	522.74	523.92
9.0	510.35	507.40	502.68	497.96	499.14	502.09	505.04	506.81	509.76	512.71
11.0	492.06	491.47	483.21	479.08	476.72	482.62	484.98	489.11	493.83	497.37
13.0	467.87	461.97	456.66	451.94	450.76	454.30	460.79	467.87	472.59	479.08
15.0	435.42	430.11	420.67	418.90	420.08	426.57	435.42	442.50	451.94	459.02
17.0	406.51	403.56	392.35	385.27	388.81	398.84	407.69	417.72	426.57	437.19
19.5	358.72	355.77	344.56	341.61	342.20	350.46	363.44	375.83	389.40	401.79
22.5	302.08	296.77	286.74	283.20	289.10	299.72	312.70	327.45	343.38	359.90
25.5	247.21	238.95	231.87	225.97	236.59	247.80	259.60	276.12	294.41	311.52
29.0	185.26	182.90	176.41	172.87	178.77	189.39	202.96	219.48	239.54	257.24
33.0	128.62	125.67	120.36	119.77	125.67	135.70	146.91	161.66	179.36	198.83
37.5	81.42	81.42	76.11	76.11	81.42	88.50	97.94	109.15	123.90	141.01
42.5	47.20	47.79	46.02	45.43	48.97	54.28	60.18	68.44	79.06	92.63
47.5	28.91	27.73	27.14	27.73	29.50	33.04	37.17	43.07	50.15	59.00
55.0	15.34	14.75	14.16	14.16	15.34	17.11	18.88	21.83	25.37	30.09
65.0	6.49	6.49	6.49	6.49	7.08	7.67	8.26	9.44	10.62	12.98
75.0	2.95	2.95	2.95	2.95	2.95	2.95	3.54	4.13	4.13	5.31
85.0	0.00	0.00	0.00	0.00	0.00	0.00	0.00	0.00	0.00	0.59
90.0	0.00	0.00	0.00	0.00	0.00	0.00	0.00	0.00	0.00	0.00

Vert. Angles **Horizontal Angles**

	50	55	60	65	70	75	80	85	90
0.0	538.67	538.67	538.67	538.67	538.67	538.67	538.67	538.67	538.67
1.0	538.08	538.08	538.08	538.67	538.67	538.67	538.67	538.67	538.08
3.0	537.49	537.49	537.49	538.08	538.08	538.08	538.67	538.08	538.67
5.0	533.36	533.95	534.54	535.13	535.72	536.31	536.90	536.90	537.49
7.0	525.69	526.87	528.64	529.82	531.00	532.18	533.36	533.95	534.54
9.0	515.66	518.61	521.56	523.92	526.28	528.05	529.23	530.41	530.41
11.0	502.09	506.22	510.35	514.48	517.43	520.38	523.33	524.51	525.10
13.0	484.98	491.47	497.96	503.27	507.99	512.12	515.66	517.43	518.02
15.0	467.87	476.13	484.39	492.06	499.14	503.86	507.99	510.35	511.53
17.0	447.81	458.43	468.46	477.90	486.16	492.65	497.96	501.50	502.09
19.5	416.54	430.11	443.09	455.48	466.69	475.54	482.62	486.75	488.52
22.5	376.42	393.53	411.23	427.75	441.91	453.71	461.97	467.87	469.64
25.5	332.76	354.00	374.06	393.53	410.64	425.39	436.60	443.09	445.45
29.0	280.25	303.85	327.45	351.05	371.70	388.81	401.79	410.05	412.41
33.0	220.66	246.03	272.58	297.95	320.96	340.43	356.36	365.21	368.16
37.5	162.25	184.67	209.45	235.41	259.60	280.25	297.36	307.39	310.93
42.5	109.15	126.85	147.50	171.10	189.39	211.22	227.15	237.18	240.13
47.5	70.21	84.37	99.71	116.82	133.93	149.86	162.25	170.51	174.05
55.0	35.99	43.07	51.33	60.77	69.62	79.06	86.73	91.45	93.22
65.0	14.75	17.70	20.65	24.19	27.73	30.68	33.63	35.40	35.99
75.0	5.90	6.49	7.67	8.85	10.03	10.62	11.80	12.39	12.39
85.0	0.59	1.18	1.77	1.77	1.77	2.36	2.36	2.36	2.36
90.0	0.00	0.00	0.00	0.00	0.00	0.00	0.00	0.00	0.00

IES INDOOR REPORT
PHOTOMETRIC FILENAME : VODE_107_BX_LO_35_S2-BL.IES

ZONAL LUMEN SUMMARY

Zone	Lumens	%Lamp	%Fixt
0-20	171.37	N.A.	28.70
0-30	316.08	N.A.	52.90
0-40	427.44	N.A.	71.50
0-60	554.09	N.A.	92.70
0-80	593.49	N.A.	99.30
0-90	597.61	N.A.	100.00
10-90	556.78	N.A.	93.20
20-40	256.07	N.A.	42.80
20-50	344.12	N.A.	57.60
40-70	154.19	N.A.	25.80
60-80	39.40	N.A.	6.60
70-80	11.86	N.A.	2.00
80-90	4.11	N.A.	0.70
90-110	0.00	N.A.	0.00
90-120	0.00	N.A.	0.00
90-130	0.00	N.A.	0.00
90-150	0.00	N.A.	0.00
90-180	0.00	N.A.	0.00
110-180	0.00	N.A.	0.00
0-180	597.61	N.A.	100.00

Total Luminaire Efficiency = N.A.%

ZONAL LUMEN SUMMARY

Zone	Lumens
0-10	40.83
10-20	130.54
20-30	144.71
30-40	111.36
40-50	88.05
50-60	38.59
60-70	27.55
70-80	11.86
80-90	4.11
90-100	0.00
100-110	0.00
110-120	0.00
120-130	0.00
130-140	0.00
140-150	0.00
150-160	0.00
160-170	0.00
170-180	0.00

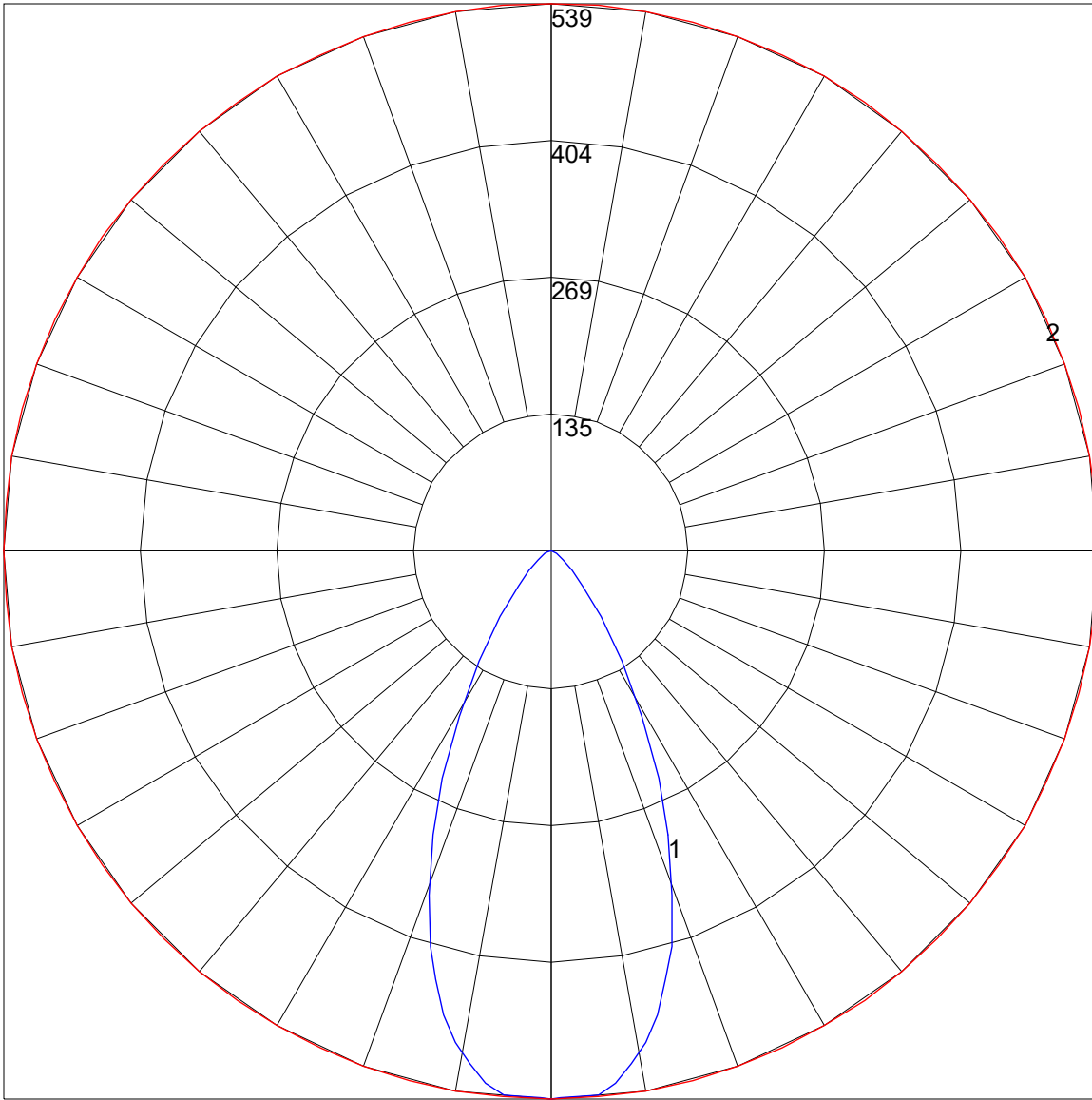
IES INDOOR REPORT
PHOTOMETRIC FILENAME : VODE_107_BX_LO_35_S2-BL.IES

COEFFICIENTS OF UTILIZATION - ZONAL CAVITY METHOD

Effective Floor Cavity Reflectance 0.20

RC	80				70				50			30			10			0
RW	70	50	30	10	70	50	30	10	50	30	10	50	30	10	50	30	10	0
0	119	119	119	119	116	116	116	116	111	111	111	106	106	106	102	102	102	100
1	112	108	105	102	109	106	103	101	102	100	97	98	96	95	95	93	92	90
2	104	98	93	89	102	97	92	88	93	89	86	90	87	84	87	85	82	80
3	98	90	84	79	96	88	83	78	85	81	77	83	79	75	81	77	74	72
4	91	82	75	70	89	81	75	70	79	73	69	77	72	68	75	71	67	65
5	86	76	69	63	84	75	68	63	73	67	62	71	66	62	69	65	61	60
6	81	70	63	58	79	69	62	57	67	61	57	66	61	57	65	60	56	54
7	76	65	58	53	74	64	57	53	63	57	52	62	56	52	60	55	52	50
8	72	60	53	49	70	60	53	49	59	53	48	58	52	48	56	52	48	46
9	68	57	50	45	66	56	49	45	55	49	45	54	48	45	53	48	44	43
10	64	53	46	42	63	53	46	42	52	46	42	51	45	42	50	45	41	40

POLAR GRAPH



Maximum Candela = 538.67 Located At Horizontal Angle = 0, Vertical Angle = 0
1 - Vertical Plane Through Horizontal Angles (0 - 180) (Through Max. Cd.)
2 - Horizontal Cone Through Vertical Angle (0) (Through Max. Cd.)