

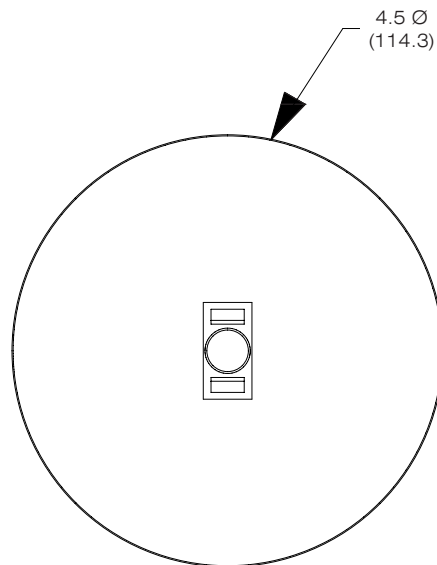
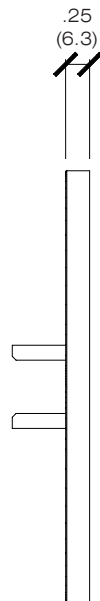
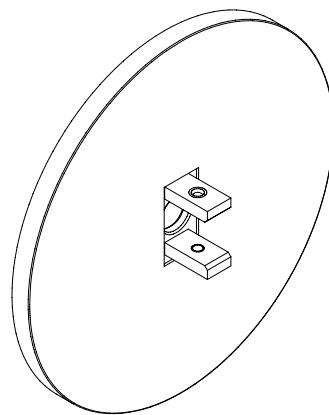
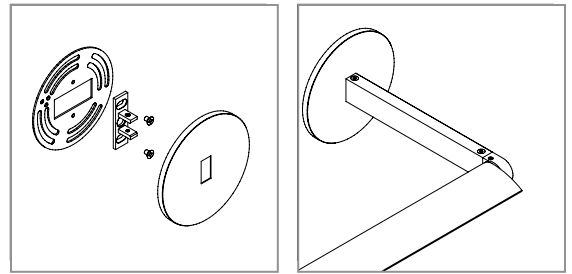


4.5" Round Canopy / Single Arm

For use with MLR System

Technical Sheet

Mounts MLR System end sections to surface. Mounts to any standard North America 4" j-box unless system specified with ballast in Vode j-box. Standard canopy finish brushed aluminum.



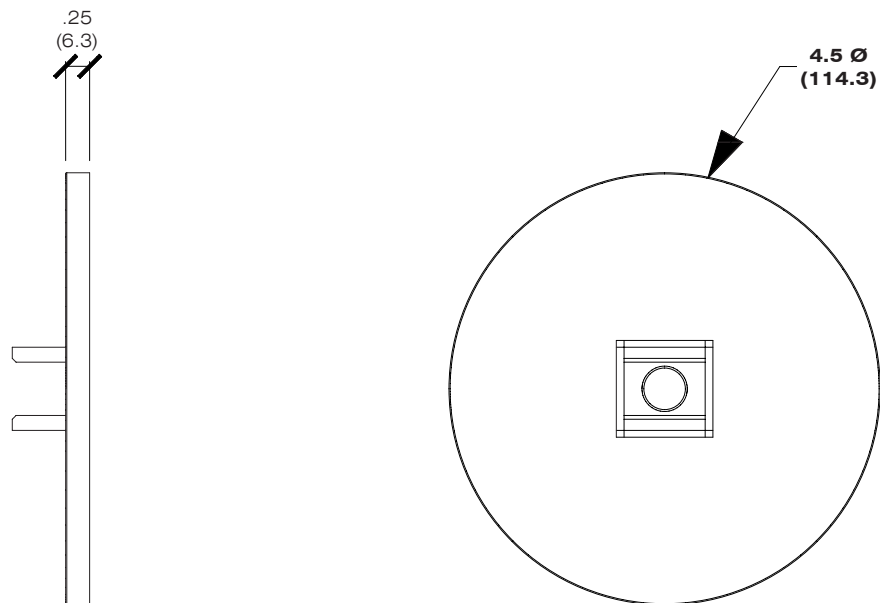
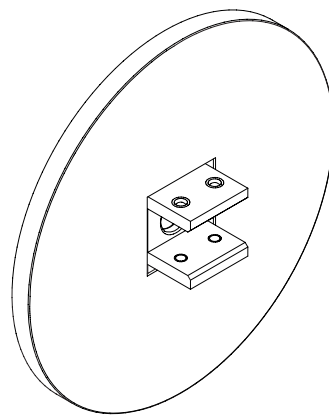
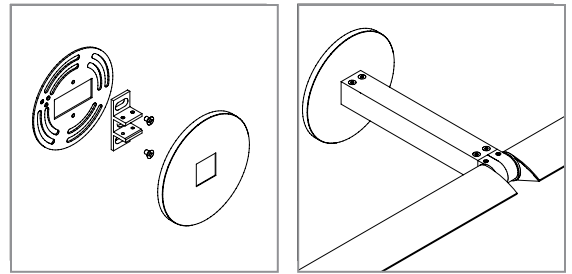
PART NUMBER	100-CRS-4-AL	Scale: 1:2
DESCRIPTION	100 Series, 4.5" round canopy, single arm, aluminum finish.	Unit: inches (mm)
		Drawn By: CB
		Date: 02/10/12



4.5" Round Canopy / Double Arm

For use with MLR System, 400 Series
Technical Sheet

Mounts MLR System mid sections & 400 Series square arm to surface.
Mounts to any standard North America 4" j-box unless system specified
with ballast in Vode j-box. Standard canopy finish brushed aluminum.



PART NUMBER	100-CRD-4-AL	Scale: 1:2
DESCRIPTION	100 Series, 400 Series, 4.5" round canopy, double arm, aluminum finish.	Unit: inches (mm)
		Drawn By: CB
		Date: 02/10/12