



Spec Guide

ZipWave™ | 707

Cove lighting for acoustical ceilings for corporate, hospitality and healthcare applications.



ZipWave: Indirect cove light. Shown: Ceiling Cove mounting.

Benefits & Features

Compatible with Industry-leading Acoustical Ceiling Provider
Designed for use with Armstrong® AXIOM® Indirect Light Coves. See the AXIOM® Indirect Light Coves [data sheet](#) for details.

Seamless Light Quality

Optimized for ceiling and wall cove. Outputs over 1000 lm/ft (3280 lm/m) are available.

Installation in Minutes

Quickly drops into place with integral power and plug & play connections.

Perfect Alignment

An architectural key way in the cove's construction means perfect alignment and light distribution. Every time.



Shown: Wall Cove mounting.

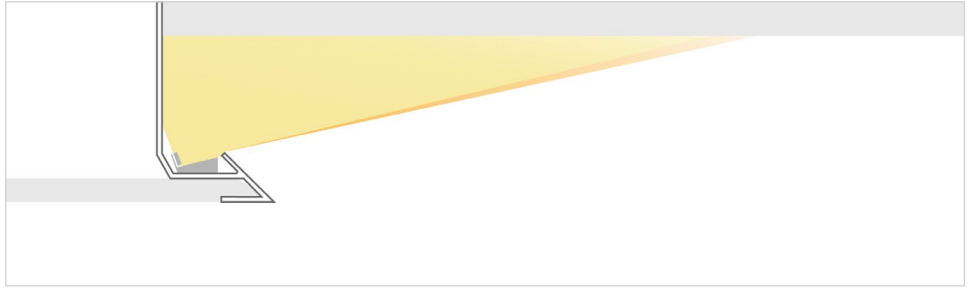


Shown: Ceiling Cove mounting with AXIOM® Knife Edge cove.

Applications

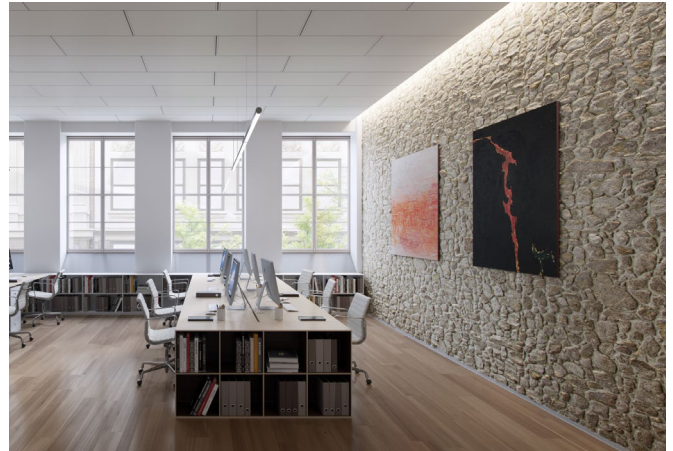
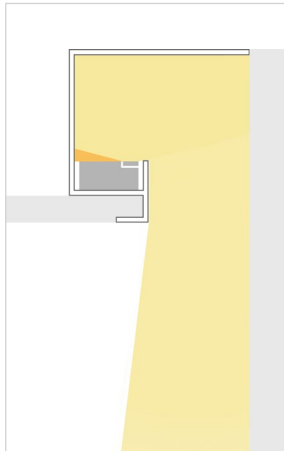
Ceiling Cove

Ideal for office, hospitality, healthcare and retail. Shown with AXIOM® Indirect Ceiling-to-Ceiling Knife Edge® for a super clean appearance that brings acoustic tile to the edge of the cove. See the AXIOM® Indirect Light Cove [data sheet](#) for details.



Wall Cove

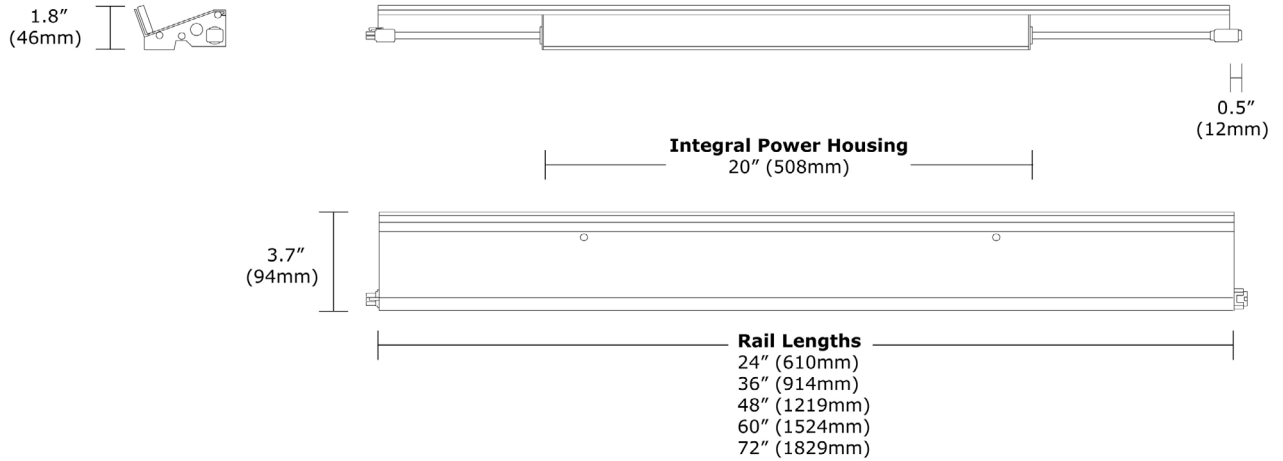
Ideal for office, hospitality, healthcare and retail. Shown with AXIOM® Indirect Ceiling-to-Wall Classic for ultimate efficiency. See the AXIOM® Indirect Light Cove [data sheet](#) for details.



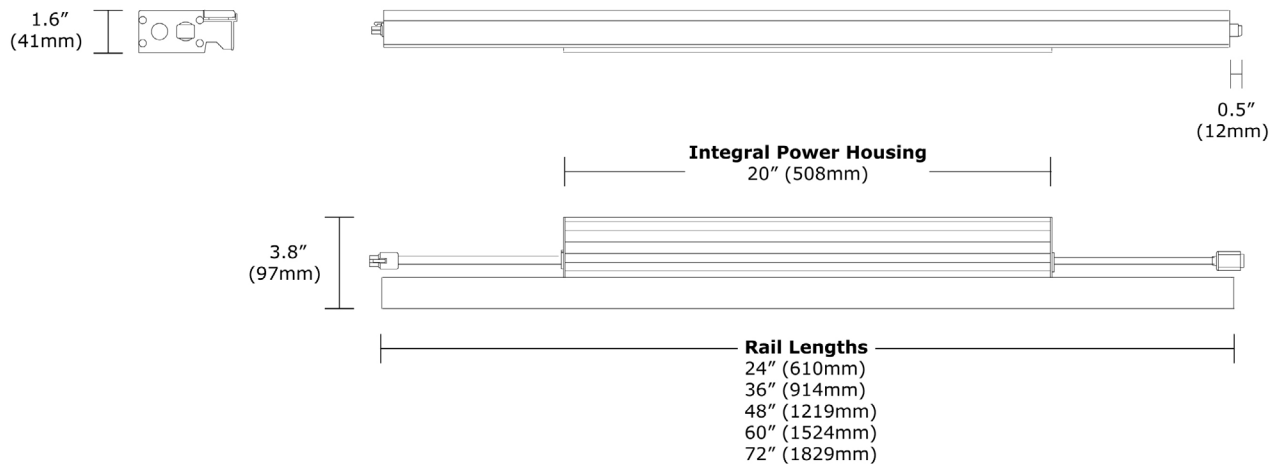
Structure

Rail Lengths	24" (610mm), 36" (914mm), 48" (1219mm), 60" (1524mm), 72" (1829mm).
Rail Dimensions	1.8" (46mm) x 3.7" (94mm) for ceiling cove. 1.6" (41mm) x 3.8" (97mm) for wall cove.
Construction / Finish	Extruded and machined 6063 aluminum. Clear Anodized finish.
Mounting	Integral power housing compatible with Armstrong® AXIOM® Indirect Light Coves.
Run Length	24" (610mm) minimum. Rail lengths may be installed up to 282' (86m)*.
Operating Temperature	32°F to 104°F (0°C to 40°C).
Humidity	0-95%, non-condensing.

Ceiling Cove



Wall Cove



*Contact Vode for project specific lengths.

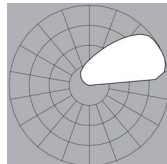
Power / Controls

Power Type	Class 2 (<60v output) constant current driver.
Controls	Dimming ¹ (0.1%, 1%) and 0-10v, DALI, Lutron EcoSystem™ are available. See Driver Guide for details.
Input Voltage	120-277v, 50/60hz.
Power Location	Integral power. See Driver Guide for more information.

Zipper Board™

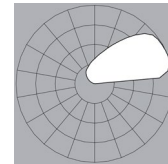
Zipper Board has 72 diodes per foot (305mm). Performance data for standard and low output is listed below.²

Ceiling Cove



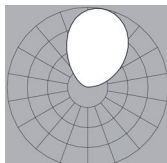
	2700K	3000K	3500K	4000K
Efficacy - Lumens per Watt	74	77	81	83
Lumens per Foot (305mm) ³	541	564	587	611
Watts per Foot (305mm) ³	7.3	7.3	7.3	7.3
CRI (>80min., 85 avg.)	-	-	84	-
Lumen Maintenance	60,000 hours L80 @25°C			

Ceiling Cove (Low Output)



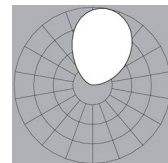
	2700K	3000K	3500K	4000K
Efficacy - Lumens per Watt	77	81	84	87
Lumens per Foot (305mm) ³	293	305	318	330
Watts per Foot (305mm) ³	3.8	3.8	3.8	3.8
CRI (>80min., 85 avg.)	-	-	84	-
Lumen Maintenance	60,000 hours L80 @25°C			

Wall Cove



	2700K	3000K	3500K	4000K
Efficacy - Lumens per Watt	86	89	93	97
Lumens per Foot (305mm) ³	627	653	681	708
Watts per Foot (305mm) ³	7.3	7.3	7.3	7.3
CRI (>80min., 85 avg.)	-	-	84	-
Lumen Maintenance	60,000 hours L80 @25°C			

Wall Cove (Low Output)



	2700K	3000K	3500K	4000K
Efficacy - Lumens per Watt	85	89	93	96
Lumens per Foot (305mm) ³	333	347	362	376
Watts per Foot (305mm) ³	3.9	3.9	3.9	3.9
CRI (>80min., 85 avg.)	-	-	84	-
Lumen Maintenance	60,000 hours L80 @25°C			

NOTES & LIMITATIONS

¹Dimming curve is factory preset to linear. Logarithmic is available upon request

²With non-standard output, ZipWave distributes up to 1231 lm/ft (4037 lm/m) at slightly reduced efficacy. See the [IES Files](#) page for performance data at High Output.

³Based on testing 4" rail section. Lumen measurement complies with IES-LM-79-08 testing procedures.

Build Your Specification

707-Z9					
---------------	--	--	--	--	--

System & Rail Type	System Length	Rail Length	Mounting	Power Type ²	Voltage
707-Z9 ZipWave	Specify system length in 1ft (305mm) increments.	Select rail length. If System Length is not divisible by Rail Length selected. Vode will complete the remainder with appropriate rail length(s). If a specific rail configuration is required, please select ZZ and identify the specific layout desired. 24 24" (610mm) 36 36" (914mm) 48 48" (1219mm) 60 60" (1524mm) 72 72" (1829mm) ZZ Other rail length or layout (please specify)	AC Armstrong® Ceiling Cove ¹ AW Armstrong® Wall Cove ¹ ZZ Other (please specify)	Integral Power AE 0-10v, 1% Dimming AT eldoLED 0-10v, 0.1% Dimming AD eldoLED DALI, 0.1% Dimming AH Lutron EcoSystem, 1% Dimming ZZ Other (please specify)	1 120v 2 277v 4 240v

0	Z					
----------	----------	--	--	--	--	--

Emergency Power	LED Type	Lumen Output	Color Temperature	Optics	Sensors	Finish
Contact Vode or your Vode agent for emergency power options.	Z Zipper Board	LO Low Output SO Standard Output HO High Output ³ ZZ Other (please specify) ³	27 2700K 30 3000K 35 3500K 40 4000K ZZ Other (please specify)	1 Diffuse Lens ZZ Other (please specify)	0 None ZZ Other (please specify)	AL Clear Anodized ⁴ ZZ Other (please specify)

NOTES & LIMITATIONS

- ¹See the data sheet for the Armstrong® AXIOM® Indirect Light Coves.
- ²Dimming curve is factory preset to linear. Logarithmic is available upon request.
- ³See [Driver Guide](#) for limitations and see the [IES Files](#) page for performance data at high output.
- ⁴Finish is Clear Anodized with a painted white reflector.

5 Year Limited Warranty. All material and component parts used in the manufacture of Vode products are warranted to be free from defects of material and/or workmanship for a period of 5 years from date of sale. Product must be installed according to Vode installation instructions and accepted trade practices. Power supplies and other auxiliary equipment is not covered under Vode warranty but may be covered by separate OEM warranty. See full Vode warranty description [here](#).

Listed to UL standards for damp location by a Nationally Recognized Testing Laboratory (NRTL) recognized by OSHA.



Approved for installation in Seismic D,E and F areas. Earthquake testing performed at the University of Buffalo.

LED Board Construction – Aluminum MCPCB, PPT connectors, RoHS compliant. Diffuse Lens – High-impact extruded acrylic glass (PMMA). Power Cable – 7.6mm, UL21388, Mylar Black w/ UV resistant PVC jacket.

Copyright © 2015 Vode Lighting LLC. All rights reserved.
 The Vode logo and Vode, ZipWave and Zipper board names are either registered trademarks or trademarks of Vode Lighting LLC in the United States and / or other countries. All other brand or product names are trademarks or registered trademarks of their respective owners. Due to ongoing innovation, specifications may change without notice.

