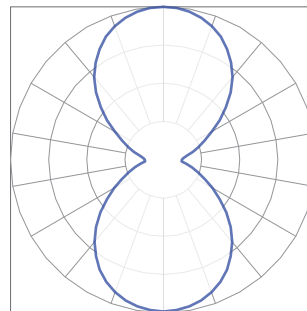
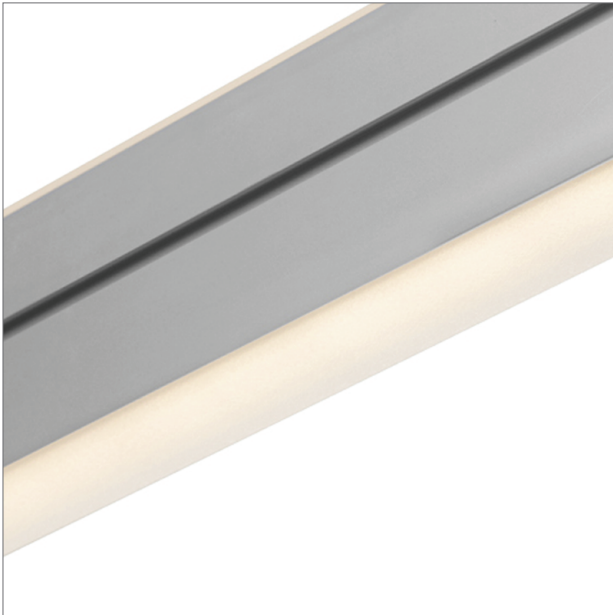


# DoubleRace™ Rail | 107

107-DR-X-4-48-X-X-X-X-X-X-Z-SO-35-22-X-X-X

The performance data in black text is confirmed through third party testing (see the following Light Laboratory report for details). The performance data in grey text is calculated by Vode, for reference only.

Technical Support: (707) 996-9898



## Details

Rail Type / Length	DoubleRace Rail, 48"
LED Type	Zipper Board
Lumen Output	Standard Output
Color Temperature	3500K, 80+ CRI
Optics	Round Diffuse up, Round Diffuse down

## Performance Summary

Color Temperature	2700K	3000K	3500K	4000K
Efficacy - Lumens per Watt	118	122	124	126
Total Lumens, 4' rail (1219mm)	5662	5841	5960	6079
Lumens per foot (305 mm)	1416	1460	1490	1520
Uplight Lumens per foot (305mm)	710	733	748	763
Downlight Lumens per foot (305mm)	705	727	742	757
Input Power (W), 4' rail (1219mm)	48.3	48.3	48.3	48.3
Watts per foot (305mm)	12.1	12.1	12.1	12.1
CRI	-	-	85	-

© 2017 Vode Lighting LLC. All rights reserved. The Vode logo and Vode, are either registered trademarks or trademarks of Vode Lighting LLC in the United States and/or other countries. All other brand or product names are trademarks or registered trademarks of their respective owners. No part of the above drawing, design, arrangements or ideas thereon shall be duplicated or used for any purpose whatsoever without the express permission of Vode Lighting LLC. Due to ongoing innovation, specifications may change without notice.



**IES INDOOR REPORT**  
**PHOTOMETRIC FILENAME : VODE\_107\_DR\_SO\_35\_22.IES**

**DESCRIPTION INFORMATION (From Photometric File)**

IESNA:LM-63-2002  
[TEST] L071704220 (SOURCE REPORT FOR REFERENCE)  
[TESTLAB] REPORT BASED ON DATA PRODUCED BY NVLAP ACCREDITED LAB  
[ISSUEDATE] 11/1/2017  
[MANUFAC] Vode Lighting  
[LUMCAT] 107-DR-48-Z-SO-35-22  
[LUMINAIRE] DoubleRace LED, 48", 3500K, 80 CRI, zipper board,  
[MORE] round diffuse lens up/round diffuse lens down, standard output  
[TEST PROCEDURE] IESNA:LM-79-08

**CHARACTERISTICS**

Lumens Per Lamp	N.A. (absolute)
Total Lamp Lumens	N.A. (absolute)
Luminaire Lumens	5944
Total Luminaire Efficiency	N.A.
Luminaire Efficacy Rating (LER)	123
Total Luminaire Watts	48.26
Ballast Factor	1.00
CIE Type	General Diffuse
Spacing Criterion (0-180)	N.A.
Spacing Criterion (90-270)	N.A.
Spacing Criterion (Diagonal)	N.A.
Basic Luminous Shape	Rectangular w/Sides
Luminous Length (0-180)	0.06 ft
Luminous Width (90-270)	3.75 ft
Luminous Height	0.21 ft

**LUMINANCE DATA (cd/sq.m)**

Angle In Degrees	Average 0-Deg	Average 45-Deg	Average 90-Deg
45	10610	13051	39016
55	7105	9058	31321
65	4555	5797	25326
75	2889	3653	18932
85	1827	2310	11434

CANDELA TABULATION

	<u>0</u>	<u>5</u>	<u>10</u>	<u>15</u>	<u>20</u>	<u>25</u>	<u>30</u>	<u>35</u>	<u>40</u>	<u>45</u>
<b>0</b>	1125.236	1125.236	1125.236	1125.236	1125.236	1125.236	1125.236	1125.236	1125.236	1125.236
<b>5</b>	1120.339	1119.726	1119.124	1118.711	1118.262	1117.873	1117.543	1117.283	1117.082	1116.953
<b>10</b>	1105.247	1104.126	1103.394	1102.816	1102.498	1102.415	1102.545	1100.893	1099.677	1098.816
<b>15</b>	1080.856	1079.275	1078.614	1078.367	1078.048	1075.641	1073.930	1072.950	1072.679	1071.334
<b>20</b>	1045.681	1043.604	1043.273	1042.825	1040.170	1038.660	1037.562	1034.825	1033.385	1031.320
<b>25</b>	1000.015	998.091	998.020	995.389	993.784	991.365	988.816	988.226	983.082	979.105
<b>30</b>	942.596	940.708	940.094	937.734	935.657	933.120	930.560	926.099	922.276	917.214
<b>35</b>	873.424	871.725	870.356	869.542	866.769	864.503	862.155	855.712	851.264	845.234
<b>40</b>	794.942	793.692	792.099	790.470	788.948	786.836	781.833	777.372	772.109	765.372
<b>45</b>	706.360	705.982	704.944	703.976	702.407	700.708	696.471	693.439	685.320	678.594
<b>50</b>	609.258	608.774	608.880	609.305	609.175	608.007	606.508	602.933	595.900	587.723
<b>55</b>	511.471	511.235	512.734	513.843	513.052	510.857	510.940	507.471	504.450	499.081
<b>60</b>	418.688	419.006	420.351	416.422	411.808	411.289	411.702	412.375	410.168	406.416
<b>65</b>	342.554	342.224	333.822	328.099	327.474	328.488	330.412	330.306	329.173	327.686
<b>70</b>	275.436	268.179	259.777	260.957	264.804	266.704	265.889	264.226	262.916	259.777
<b>75</b>	219.976	205.237	209.780	211.196	211.149	211.244	210.170	209.592	209.025	205.403
<b>80</b>	170.982	168.882	171.419	172.386	171.513	170.274	168.705	167.147	164.280	159.855
<b>85</b>	136.585	147.854	147.866	148.149	145.718	142.638	137.966	134.119	130.614	125.269
<b>90</b>	137.741	140.951	141.836	142.320	138.650	133.694	127.180	123.357	119.982	114.106
<b>95</b>	148.350	155.300	155.430	154.981	152.255	149.364	145.411	141.435	137.848	131.983
<b>100</b>	179.608	176.622	178.876	179.348	178.558	176.965	174.723	173.354	170.935	167.029
<b>105</b>	226.926	214.064	216.152	217.521	216.931	216.860	215.598	213.828	211.680	206.252
<b>110</b>	276.804	272.403	263.223	262.385	265.618	266.090	265.335	263.813	262.951	259.305
<b>115</b>	338.436	339.038	333.716	328.382	328.158	328.996	330.589	330.601	330.577	328.972
<b>120</b>	418.286	418.452	419.702	416.741	413.165	412.563	410.734	411.608	412.032	407.820
<b>125</b>	510.197	509.854	511.141	512.309	512.214	511.164	511.093	507.447	504.603	498.857
<b>130</b>	607.794	607.440	607.676	607.889	607.865	607.488	606.390	603.358	597.399	589.056
<b>135</b>	705.770	705.640	704.649	703.917	702.619	701.545	698.300	696.306	688.778	682.276
<b>140</b>	797.680	796.724	794.824	792.972	791.544	789.998	785.597	781.479	776.487	769.690
<b>145</b>	877.436	875.961	874.687	873.873	871.111	868.905	866.592	860.775	856.951	851.169
<b>150</b>	947.894	946.336	945.982	943.504	941.392	939.068	936.849	932.719	929.191	924.424
<b>155</b>	1006.481	1004.864	1005.148	1002.469	1000.805	998.540	996.286	995.991	991.141	987.377
<b>160</b>	1053.610	1051.758	1051.592	1051.274	1048.572	1047.156	1046.259	1043.816	1042.731	1040.618
<b>165</b>	1089.671	1088.102	1087.429	1087.205	1086.981	1084.715	1083.110	1082.154	1081.824	1080.373
<b>170</b>	1114.758	1113.696	1112.988	1112.469	1112.197	1112.174	1112.362	1110.663	1109.412	1108.551
<b>175</b>	1129.944	1129.390	1128.847	1128.422	1128.021	1127.655	1127.360	1127.112	1126.935	1126.817
<b>180</b>	1133.980	1133.980	1133.980	1133.980	1133.980	1133.980	1133.980	1133.980	1133.980	1133.980

Vert. Angles Horizontal Angles

	<u>50</u>	<u>55</u>	<u>60</u>	<u>65</u>	<u>70</u>	<u>75</u>	<u>80</u>	<u>85</u>	<u>90</u>
<b>0</b>	1125.236	1125.236	1125.236	1125.236	1125.236	1125.236	1125.236	1125.236	1125.236
<b>5</b>	1116.894	1116.905	1116.976	1117.118	1117.330	1117.602	1117.885	1118.310	1118.770
<b>10</b>	1098.332	1098.214	1098.415	1097.612	1097.105	1096.916	1097.034	1097.376	1098.202
<b>15</b>	1069.493	1067.357	1065.988	1065.387	1065.623	1064.207	1063.416	1063.156	1064.006
<b>20</b>	1028.417	1025.196	1022.954	1020.063	1018.670	1018.824	1017.018	1016.145	1017.266
<b>25</b>	976.981	972.049	966.715	963.612	959.954	957.582	956.083	954.526	956.119
<b>30</b>	911.857	906.747	901.201	895.042	891.089	886.605	884.870	882.451	884.103
<b>35</b>	838.048	832.242	824.313	817.209	810.424	805.220	801.704	799.013	798.860
<b>40</b>	757.654	748.533	739.164	729.830	721.523	715.835	710.490	706.796	705.286
<b>45</b>	668.376	658.523	649.142	638.144	628.598	620.916	615.228	611.606	609.553
<b>50</b>	578.578	567.639	556.724	544.959	533.655	525.537	519.342	514.386	510.787
<b>55</b>	488.532	477.345	465.368	449.627	435.208	423.585	414.794	409.000	405.944
<b>60</b>	402.828	392.480	378.131	364.396	352.726	343.533	336.701	331.769	330.896

**IES INDOOR REPORT**  
**PHOTOMETRIC FILENAME : VODE\_107\_DR\_SO\_35\_22.IES**

**CANDELA TABULATION - (Cont.)**

<b>65</b>	323.403	314.033	302.611	289.678	277.099	266.007	258.550	252.815	250.833
<b>70</b>	254.255	246.585	235.422	222.454	209.839	197.898	189.720	184.965	182.735
<b>75</b>	199.420	192.010	180.516	166.156	152.515	140.314	129.446	123.770	123.947
<b>80</b>	154.840	146.721	135.016	122.401	107.156	95.840	88.571	82.034	83.780
<b>85</b>	118.861	109.634	98.636	88.417	73.443	59.153	46.173	36.545	34.196
<b>90</b>	106.318	95.828	83.579	70.942	56.192	41.300	27.529	15.682	5.003
<b>95</b>	124.514	116.183	107.345	90.530	75.756	60.381	45.111	36.073	34.102
<b>100</b>	159.005	149.376	137.718	121.800	105.893	95.238	88.701	85.302	84.653
<b>105</b>	198.688	190.676	179.148	165.271	152.196	140.644	130.520	125.104	125.316
<b>110</b>	253.051	245.393	234.572	222.218	210.488	199.939	191.302	185.933	184.694
<b>115</b>	324.075	315.095	303.921	291.330	279.542	269.158	260.579	255.092	256.225
<b>120</b>	402.710	393.459	380.857	367.912	356.738	348.478	342.448	336.760	334.813
<b>125</b>	489.181	478.313	466.714	453.391	439.279	428.281	419.761	413.472	410.451
<b>130</b>	581.032	571.911	560.217	548.511	537.443	528.935	522.185	517.819	516.474
<b>135</b>	672.576	664.175	653.201	642.793	634.451	628.090	621.364	617.128	616.220
<b>140</b>	762.056	753.949	745.064	736.178	728.426	723.033	717.700	714.101	712.637
<b>145</b>	844.715	839.853	831.676	824.749	818.731	813.822	809.869	807.155	807.191
<b>150</b>	919.279	914.406	909.025	902.912	899.207	895.183	893.708	891.183	892.823
<b>155</b>	985.371	980.639	975.388	972.178	968.674	966.951	965.936	964.036	965.240
<b>160</b>	1037.539	1034.305	1032.240	1029.243	1027.568	1027.332	1025.868	1025.349	1026.860
<b>165</b>	1078.485	1076.384	1075.015	1074.390	1074.638	1073.576	1073.281	1073.564	1074.980
<b>170</b>	1108.079	1107.996	1108.244	1107.430	1106.923	1106.734	1106.875	1107.241	1108.091
<b>175</b>	1126.758	1126.758	1126.829	1126.959	1127.148	1127.396	1127.632	1128.045	1128.469
<b>180</b>	1133.980	1133.980	1133.980	1133.980	1133.980	1133.980	1133.980	1133.980	1133.980

**IES INDOOR REPORT**  
**PHOTOMETRIC FILENAME : VODE\_107\_DR\_SO\_35\_22.IES**

**ZONAL LUMEN SUMMARY**

Zone	Lumens	%Lamp	%Fixt
0-20	408.11	N.A.	6.90
0-30	858.17	N.A.	14.40
0-40	1383.00	N.A.	23.30
0-60	2327.02	N.A.	39.10
0-80	2835.35	N.A.	47.70
0-90	2960.74	N.A.	49.80
10-90	2854.59	N.A.	48.00
20-40	974.89	N.A.	16.40
20-50	1489.72	N.A.	25.10
40-70	1252.89	N.A.	21.10
60-80	508.32	N.A.	8.60
70-80	199.46	N.A.	3.40
80-90	125.40	N.A.	2.10
90-110	331.62	N.A.	5.60
90-120	641.53	N.A.	10.80
90-130	1072.00	N.A.	18.00
90-150	2117.89	N.A.	35.60
90-180	2983.3	N.A.	50.20
110-180	2651.68	N.A.	44.60
0-180	5944.04	N.A.	100.00

Total Luminaire Efficiency = N.A.%

**ZONAL LUMEN SUMMARY**

Zone	Lumens
0-10	106.15
10-20	301.95
20-30	450.06
30-40	524.83
40-50	514.83
50-60	429.20
60-70	308.86
70-80	199.46
80-90	125.40
90-100	129.43
100-110	202.19
110-120	309.91
120-130	430.47
130-140	517.28
140-150	528.62
150-160	453.77
160-170	304.56
170-180	107.07

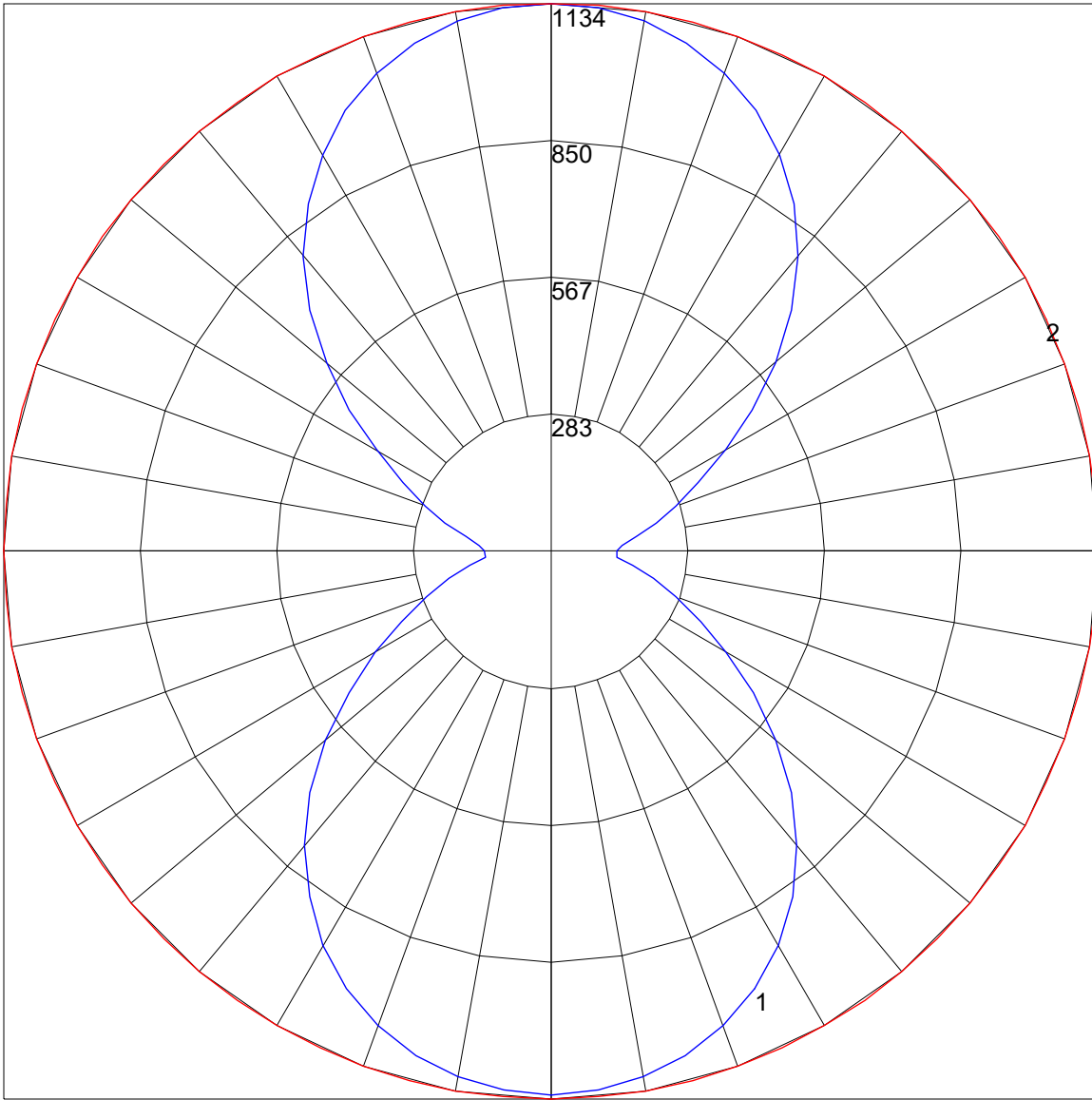
**IES INDOOR REPORT**  
**PHOTOMETRIC FILENAME : VODE\_107\_DR\_SO\_35\_22.IES**

**COEFFICIENTS OF UTILIZATION - ZONAL CAVITY METHOD**

Effective Floor Cavity Reflectance 0.20

RC	80				70				50			30			10			0
RW	70	50	30	10	70	50	30	10	50	30	10	50	30	10	50	30	10	0
0	107	107	107	107	99	99	99	99	83	83	83	69	69	69	56	56	56	50
1	97	93	89	85	90	86	82	79	72	70	67	60	58	57	49	48	46	41
2	89	81	75	69	81	75	69	65	63	59	56	53	50	47	43	41	39	34
3	81	71	64	58	74	66	59	54	56	51	47	47	43	40	38	35	33	29
4	74	63	55	49	68	58	51	46	50	44	40	42	38	34	34	31	29	25
5	68	56	48	42	62	52	45	40	45	39	35	37	33	30	31	28	25	22
6	63	50	42	36	58	47	40	34	40	34	30	34	29	26	28	25	22	19
7	58	46	38	32	53	42	35	30	36	31	27	31	26	23	26	22	20	17
8	54	41	34	28	49	39	32	27	33	28	24	28	24	21	23	20	18	15
9	50	38	30	25	46	35	29	24	30	25	21	26	22	19	22	18	16	14
10	47	35	27	23	43	32	26	21	28	23	19	24	20	17	20	17	14	13

POLAR GRAPH



Maximum Candela = 1133.98 Located At Horizontal Angle = 0, Vertical Angle = 180  
# 1 - Vertical Plane Through Horizontal Angles (0 - 180) (Through Max. Cd.)  
# 2 - Horizontal Cone Through Vertical Angle (180) (Through Max. Cd.)