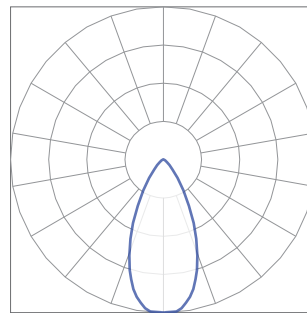
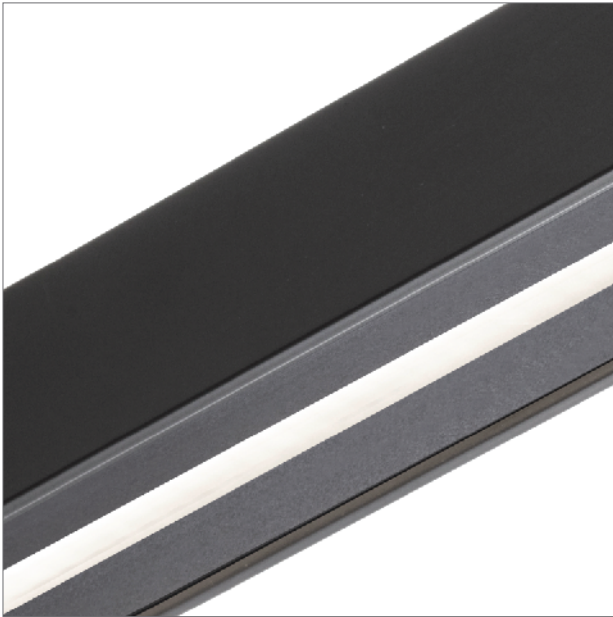


# BoxRail® | 107

107-BX-X-4-48-X-X-X-X-X-Z-SO-359-S2-X-BL-X

The performance data in black text is confirmed through third party testing (see the following Light Laboratory report for details). The performance data in grey text is calculated by Vode, for reference only.

Technical Support: (707) 996-9898



## Details

Rail Type / Length	BoxRail, 48"
LED Type	Zipper Board
Lumen Output	Standard Output
Color Temperature	3500K, 90+ CRI
Optics	60° Black Symmetric Lens

## Performance Summary

	2700K	3000K	3500K	4000K
Color Temperature	2700K	3000K	3500K	4000K
Efficacy - Lumens per Watt	41	43	43	44
Total Lumens, 4' rail (1219mm)	981	1012	1033	1054
Lumens per foot (305mm)	245	253	258	263
Input Power (W), 4' rail (1219mm)	24.1	24.1	24.1	24.1
Watts per foot (305mm)	6.1	6.1	6.1	6.1
CRI	-	-	96	-

© 2017 Vode Lighting LLC. All rights reserved. The Vode logo and Vode, are either registered trademarks or trademarks of Vode Lighting LLC in the United States and/or other countries. All other brand or product names are trademarks or registered trademarks of their respective owners. No part of the above drawing, design, arrangements or ideas thereon shall be duplicated or used for any purpose whatsoever without the express permission of Vode Lighting LLC. Due to ongoing innovation, specifications may change without notice.



**IES INDOOR REPORT**  
**PHOTOMETRIC FILENAME : VODE\_107\_BX\_SO\_359\_S2-BL.IES**

**DESCRIPTION INFORMATION (From Photometric File)**

IESNA:LM-63-2002  
 [TEST] L071704212 (SOURCE REPORT FOR REFERENCE)  
 [TESTLAB] REPORT BASED ON DATA PRODUCED BY NVLAP ACCREDITED LAB  
 [ISSUEDATE] 11/1/2017  
 [MANUFAC] Vode Lighting  
 [LUMCAT] 107-BX-48-Z-SO-359-S2-BL  
 [LUMINAIRE] BoxRail LED, 48", 3500K, 90 CRI, zipper board,  
 [MORE] 60° black symmetric lens, standard output  
 [TEST PROCEDURE] IESNA:LM-79-08

**CHARACTERISTICS**

Lumens Per Lamp	N.A. (absolute)
Total Lamp Lumens	N.A. (absolute)
Luminaire Lumens	1033
Total Luminaire Efficiency	N.A.
Luminaire Efficacy Rating (LER)	43
Total Luminaire Watts	24.07
Ballast Factor	1.00
CIE Type	Direct
Spacing Criterion (0-180)	0.78
Spacing Criterion (90-270)	1.14
Spacing Criterion (Diagonal)	0.88
Basic Luminous Shape	Rectangular
Luminous Length (0-180)	0.02 ft
Luminous Width (90-270)	3.83 ft
Luminous Height	0.00 ft

**LUMINANCE DATA (cd/sq.m)**

Angle In Degrees	Average 0-Deg	Average 45-Deg	Average 90-Deg
45	13062	26023	71082
55	6491	12732	39446
65	3727	7454	20669
75	2766	4979	11619
85	0	1643	6572

**IES INDOOR REPORT**  
**PHOTOMETRIC FILENAME : VODE\_107\_BX\_SO\_359\_S2-BL.IES**

**CANDELA TABULATION**

	<b>0</b>	<b>5</b>	<b>10</b>	<b>15</b>	<b>20</b>	<b>25</b>	<b>30</b>	<b>35</b>	<b>40</b>	<b>45</b>
<b>0.0</b>	931.26	931.26	931.26	931.26	931.26	931.26	931.26	931.26	931.26	931.26
<b>1.0</b>	928.20	927.18	927.18	928.20	929.22	929.22	930.24	930.24	930.24	930.24
<b>3.0</b>	927.18	927.18	926.16	924.12	924.12	925.14	927.18	927.18	928.20	928.20
<b>5.0</b>	927.18	925.14	920.04	915.96	913.92	916.98	918.00	919.02	920.04	921.06
<b>7.0</b>	911.88	910.86	904.74	896.58	893.52	895.56	898.62	900.66	903.72	905.76
<b>9.0</b>	882.30	877.20	869.04	860.88	862.92	868.02	873.12	876.18	881.28	886.38
<b>11.0</b>	850.68	849.66	835.38	828.24	824.16	834.36	838.44	845.58	853.74	859.86
<b>13.0</b>	808.86	798.66	789.48	781.32	779.28	785.40	796.62	808.86	817.02	828.24
<b>15.0</b>	752.76	743.58	727.26	724.20	726.24	737.46	752.76	765.00	781.32	793.56
<b>17.0</b>	702.78	697.68	678.30	666.06	672.18	689.52	704.82	722.16	737.46	755.82
<b>19.5</b>	620.16	615.06	595.68	590.58	591.60	605.88	628.32	649.74	673.20	694.62
<b>22.5</b>	522.24	513.06	495.72	489.60	499.80	518.16	540.60	566.10	593.64	622.20
<b>25.5</b>	427.38	413.10	400.86	390.66	409.02	428.40	448.80	477.36	508.98	538.56
<b>29.0</b>	320.28	316.20	304.98	298.86	309.06	327.42	350.88	379.44	414.12	444.72
<b>33.0</b>	222.36	217.26	208.08	207.06	217.26	234.60	253.98	279.48	310.08	343.74
<b>37.5</b>	140.76	140.76	131.58	131.58	140.76	153.00	169.32	188.70	214.20	243.78
<b>42.5</b>	81.60	82.62	79.56	78.54	84.66	93.84	104.04	118.32	136.68	160.14
<b>47.5</b>	49.98	47.94	46.92	47.94	51.00	57.12	64.26	74.46	86.70	102.00
<b>55.0</b>	26.52	25.50	24.48	24.48	26.52	29.58	32.64	37.74	43.86	52.02
<b>65.0</b>	11.22	11.22	11.22	11.22	12.24	13.26	14.28	16.32	18.36	22.44
<b>75.0</b>	5.10	5.10	5.10	5.10	5.10	5.10	6.12	7.14	7.14	9.18
<b>85.0</b>	0.00	0.00	0.00	0.00	0.00	0.00	0.00	0.00	0.00	1.02
<b>90.0</b>	0.00	0.00	0.00	0.00	0.00	0.00	0.00	0.00	0.00	0.00

**Vert. Angles**      **Horizontal Angles**

	<b>50</b>	<b>55</b>	<b>60</b>	<b>65</b>	<b>70</b>	<b>75</b>	<b>80</b>	<b>85</b>	<b>90</b>
<b>0.0</b>	931.26	931.26	931.26	931.26	931.26	931.26	931.26	931.26	931.26
<b>1.0</b>	930.24	930.24	930.24	931.26	931.26	931.26	931.26	931.26	930.24
<b>3.0</b>	929.22	929.22	929.22	930.24	930.24	930.24	931.26	930.24	931.26
<b>5.0</b>	922.08	923.10	924.12	925.14	926.16	927.18	928.20	928.20	929.22
<b>7.0</b>	908.82	910.86	913.92	915.96	918.00	920.04	922.08	923.10	924.12
<b>9.0</b>	891.48	896.58	901.68	905.76	909.84	912.90	914.94	916.98	916.98
<b>11.0</b>	868.02	875.16	882.30	889.44	894.54	899.64	904.74	906.78	907.80
<b>13.0</b>	838.44	849.66	860.88	870.06	878.22	885.36	891.48	894.54	895.56
<b>15.0</b>	808.86	823.14	837.42	850.68	862.92	871.08	878.22	882.30	884.34
<b>17.0</b>	774.18	792.54	809.88	826.20	840.48	851.70	860.88	867.00	868.02
<b>19.5</b>	720.12	743.58	766.02	787.44	806.82	822.12	834.36	841.50	844.56
<b>22.5</b>	650.76	680.34	710.94	739.50	763.98	784.38	798.66	808.86	811.92
<b>25.5</b>	575.28	612.00	646.68	680.34	709.92	735.42	754.80	766.02	770.10
<b>29.0</b>	484.50	525.30	566.10	606.90	642.60	672.18	694.62	708.90	712.98
<b>33.0</b>	381.48	425.34	471.24	515.10	554.88	588.54	616.08	631.38	636.48
<b>37.5</b>	280.50	319.26	362.10	406.98	448.80	484.50	514.08	531.42	537.54
<b>42.5</b>	188.70	219.30	255.00	295.80	327.42	365.16	392.70	410.04	415.14
<b>47.5</b>	121.38	145.86	172.38	201.96	231.54	259.08	280.50	294.78	300.90
<b>55.0</b>	62.22	74.46	88.74	105.06	120.36	136.68	149.94	158.10	161.16
<b>65.0</b>	25.50	30.60	35.70	41.82	47.94	53.04	58.14	61.20	62.22
<b>75.0</b>	10.20	11.22	13.26	15.30	17.34	18.36	20.40	21.42	21.42
<b>85.0</b>	1.02	2.04	3.06	3.06	3.06	4.08	4.08	4.08	4.08
<b>90.0</b>	0.00	0.00	0.00	0.00	0.00	0.00	0.00	0.00	0.00

**IES INDOOR REPORT**  
**PHOTOMETRIC FILENAME : VODE\_107\_BX\_SO\_359\_S2-BL.IES**

**ZONAL LUMEN SUMMARY**

Zone	Lumens	%Lamp	%Fixt
0-20	296.28	N.A.	28.70
0-30	546.45	N.A.	52.90
0-40	738.97	N.A.	71.50
0-60	957.92	N.A.	92.70
0-80	1026.04	N.A.	99.30
0-90	1033.15	N.A.	100.00
10-90	962.56	N.A.	93.20
20-40	442.69	N.A.	42.80
20-50	594.92	N.A.	57.60
40-70	266.57	N.A.	25.80
60-80	68.12	N.A.	6.60
70-80	20.50	N.A.	2.00
80-90	7.11	N.A.	0.70
90-110	0.00	N.A.	0.00
90-120	0.00	N.A.	0.00
90-130	0.00	N.A.	0.00
90-150	0.00	N.A.	0.00
90-180	0.00	N.A.	0.00
110-180	0.00	N.A.	0.00
0-180	1033.15	N.A.	100.00

Total Luminaire Efficiency = N.A.%

**ZONAL LUMEN SUMMARY**

Zone	Lumens
0-10	70.59
10-20	225.69
20-30	250.17
30-40	192.52
40-50	152.23
50-60	66.72
60-70	47.62
70-80	20.50
80-90	7.11
90-100	0.00
100-110	0.00
110-120	0.00
120-130	0.00
130-140	0.00
140-150	0.00
150-160	0.00
160-170	0.00
170-180	0.00

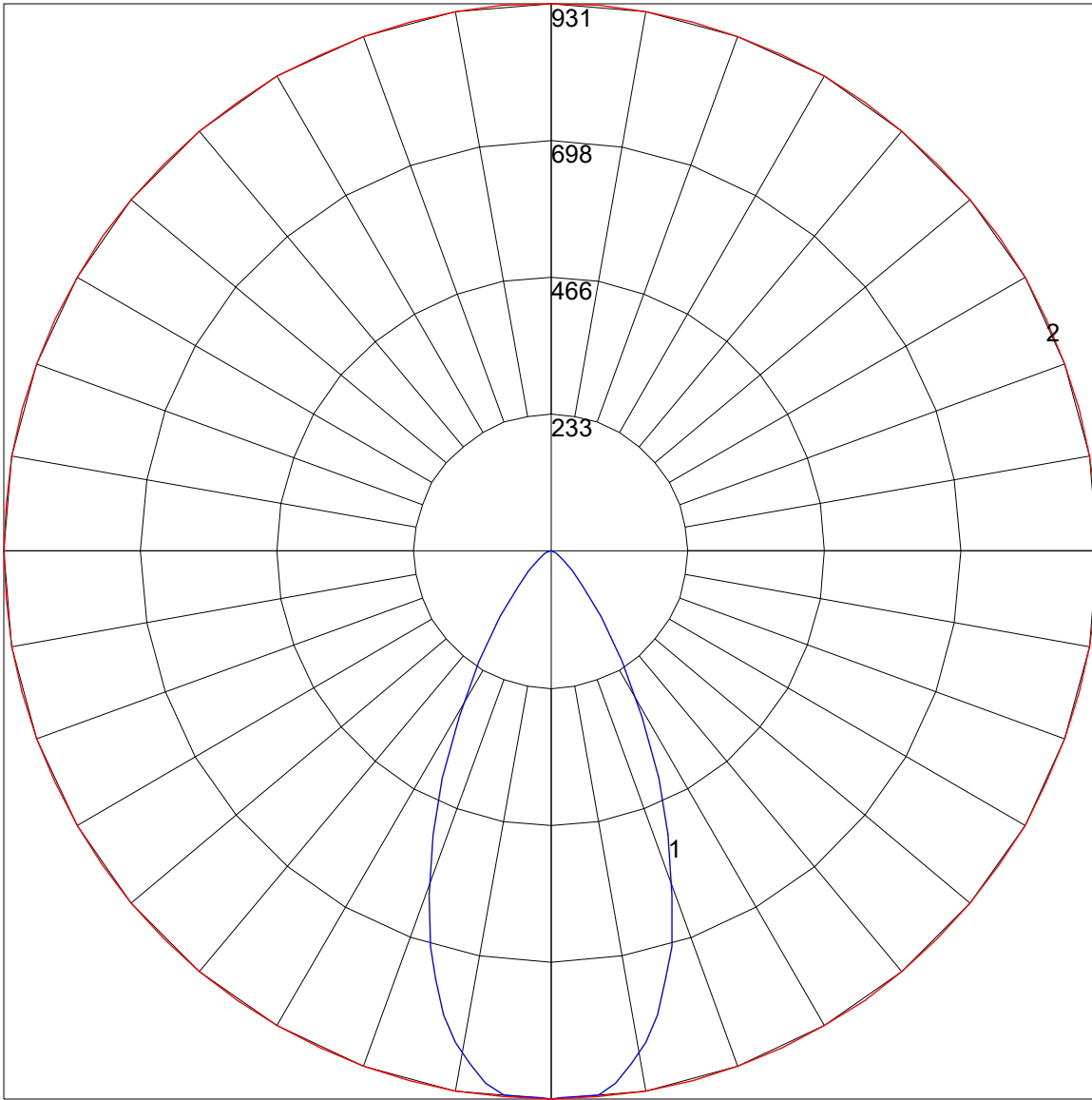
**IES INDOOR REPORT**  
**PHOTOMETRIC FILENAME : VODE\_107\_BX\_SO\_359\_S2-BL.IES**

**COEFFICIENTS OF UTILIZATION - ZONAL CAVITY METHOD**

Effective Floor Cavity Reflectance 0.20

RC	80				70				50			30			10			0
	RW	70	50	30	10	70	50	30	10	50	30	10	50	30	10	50	30	10
0	119	119	119	119	116	116	116	116	111	111	111	106	106	106	102	102	102	100
1	112	108	105	102	109	106	103	101	102	100	98	98	96	95	95	93	92	90
2	105	98	93	89	102	97	92	88	93	89	86	90	87	84	87	85	82	81
3	98	90	84	79	96	88	83	78	86	81	77	83	79	75	81	77	74	72
4	92	82	75	70	90	81	75	70	79	73	69	77	72	68	75	71	67	66
5	86	76	69	63	84	75	68	63	73	67	63	71	66	62	69	65	61	60
6	81	70	63	58	79	69	62	57	68	62	57	66	61	57	65	60	56	55
7	76	65	58	53	74	64	57	53	63	57	52	62	56	52	60	55	52	50
8	72	61	53	49	70	60	53	49	59	53	48	58	52	48	57	52	48	46
9	68	57	50	45	67	56	49	45	55	49	45	54	49	45	53	48	44	43
10	64	53	46	42	63	53	46	42	52	46	42	51	45	42	50	45	41	40

POLAR GRAPH



Maximum Candela = 931.26 Located At Horizontal Angle = 0, Vertical Angle = 0  
# 1 - Vertical Plane Through Horizontal Angles (0 - 180) (Through Max. Cd.)  
# 2 - Horizontal Cone Through Vertical Angle (0) (Through Max. Cd.)