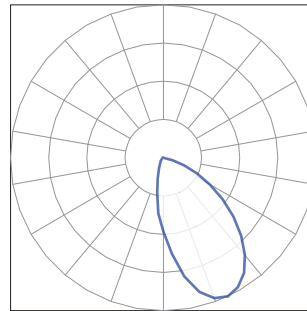
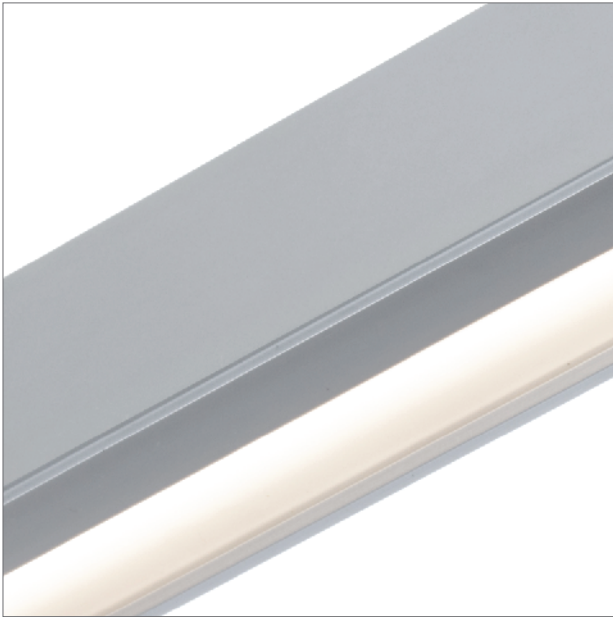


BoxRail® | 107

107-BX-X-4-48-X-X-X-X-X-Z-SO-359-A1-X-AL / WH-X

The performance data in black text is confirmed through third party testing (see the following Light Laboratory report for details). The performance data in grey text is calculated by Vode, for reference only.

Technical Support: (707) 996-9898



Details

Rail Type / Length	BoxRail, 48"
LED Type	Zipper Board
Lumen Output	Standard Output
Color Temperature	3500K, 90+ CRI
Optics	85° Asymmetric Lens

Performance Summary

	2700K	3000K	3500K	4000K
Color Temperature	2700K	3000K	3500K	4000K
Efficacy - Lumens per Watt	70	73	74	76
Total Lumens, 4' rail (1219mm)	1682	1735	1770	1805
Lumens per foot (305mm)	420	434	443	451
Input Power (W), 4' rail (1219mm)	24.1	24.1	24.1	24.1
Watts per foot (305mm)	6.1	6.1	6.1	6.1
CRI	-	-	96	-

© 2017 Vode Lighting LLC. All rights reserved. The Vode logo and Vode, are either registered trademarks or trademarks of Vode Lighting LLC in the United States and/or other countries. All other brand or product names are trademarks or registered trademarks of their respective owners. No part of the above drawing, design, arrangements or ideas thereon shall be duplicated or used for any purpose whatsoever without the express permission of Vode Lighting LLC. Due to ongoing innovation, specifications may change without notice.



IES INDOOR REPORT
PHOTOMETRIC FILENAME : VODE_107_BX_SO_359_A1.IES

DESCRIPTION INFORMATION (From Photometric File)

IESNA:LM-63-2002
[TEST] L071704225 (SOURCE REPORT FOR REFERENCE)
[TESTLAB] REPORT BASED ON DATA PRODUCED BY NVLAP ACCREDITED LAB
[ISSUEDATE] 11/1/2017
[MANUFAC] Vode Lighting
[LUMCAT] 707-Z2-48-Z-SO-359-A1-AL
[LUMINAIRE] ZipTwo LED, 48", 3500K, 90 CRI, zipper board,
[MORE] 85° white asymmetric lens, standard output
[TEST PROCEDURE] IESNA:LM-79-08

CHARACTERISTICS

Lumens Per Lamp	N.A. (absolute)
Total Lamp Lumens	N.A. (absolute)
Luminaire Lumens	1770
Total Luminaire Efficiency	N.A.
Luminaire Efficacy Rating (LER)	68
Total Luminaire Watts	26.2
Ballast Factor	1.00
CIE Type	Direct
Spacing Criterion (0-180)	1.94
Spacing Criterion (90-270)	1.20
Spacing Criterion (Diagonal)	1.36
Basic Luminous Shape	Rectangular
Luminous Length (0-180)	0.06 ft
Luminous Width (90-270)	4.02 ft
Luminous Height	0.00 ft

LUMINANCE DATA (cd/sq.m)

Angle In Degrees	Average 0-Deg	Average 45-Deg	Average 90-Deg
45	56095	49067	22130
55	51168	42530	16881
65	43497	34768	13251
75	35366	27488	10462
85	30764	21925	6804

CANDELA TABULATION

	<u>0</u>	<u>5</u>	<u>10</u>	<u>15</u>	<u>20</u>	<u>25</u>	<u>30</u>	<u>35</u>	<u>40</u>	<u>45</u>
0	682.084	682.084	682.084	682.084	682.084	682.084	682.084	682.084	682.084	682.084
5	812.930	812.420	810.808	808.523	805.137	800.731	795.733	789.551	782.605	775.067
10	940.991	939.971	937.258	933.198	926.925	919.051	909.820	898.212	884.830	870.356
15	1028.905	1027.803	1024.835	1019.929	1012.472	1002.986	991.134	976.558	959.708	940.736
20	1078.538	1077.518	1074.468	1069.307	1061.851	1051.773	1039.666	1024.162	1005.526	984.351
25	1096.327	1095.307	1092.338	1087.514	1079.894	1069.817	1057.281	1041.522	1022.295	1000.018
30	1084.801	1083.699	1080.996	1076.161	1068.878	1058.638	1046.102	1029.578	1009.504	986.218
35	1045.847	1044.827	1042.542	1037.962	1030.934	1020.775	1007.556	990.032	968.347	943.531
40	979.945	979.271	977.150	972.917	966.144	955.893	941.837	923.284	899.915	873.059
45	889.664	889.409	887.624	883.901	877.547	866.796	852.394	832.657	807.340	778.199
50	779.892	779.555	778.199	774.476	768.203	757.870	742.713	722.048	695.538	665.550
55	658.267	658.104	656.656	653.524	647.516	637.520	622.526	601.688	576.708	547.148
60	532.919	532.746	531.563	528.931	523.597	513.947	500.137	481.675	459.143	433.480
65	412.304	412.223	411.376	409.000	404.512	396.382	384.866	368.863	351.237	329.562
70	303.389	303.215	302.450	300.676	297.034	290.598	281.530	269.249	254.521	238.680
75	205.306	205.224	204.459	203.021	200.308	195.565	189.047	180.489	170.330	159.569
80	122.808	122.726	122.135	121.033	119.003	115.780	111.629	106.131	99.776	93.248
85	60.139	59.966	59.456	58.528	57.089	55.223	52.683	49.633	46.247	42.860
90	0.000	0.000	0.000	0.000	0.000	0.000	0.000	0.000	0.000	0.000

Vert. Horizontal Angles

	<u>50</u>	<u>55</u>	<u>60</u>	<u>65</u>	<u>70</u>	<u>75</u>	<u>80</u>	<u>85</u>	<u>90</u>	<u>95</u>
0	682.084	682.084	682.084	682.084	682.084	682.084	682.084	682.084	682.084	682.084
5	766.510	757.115	747.456	737.205	726.709	714.928	703.494	692.060	680.289	668.182
10	853.669	835.033	815.551	794.458	772.191	747.283	722.894	698.159	672.078	646.068
15	918.377	893.387	866.368	836.900	804.882	768.376	732.299	695.028	655.727	616.763
20	958.943	929.720	897.620	861.880	822.579	776.679	730.351	681.982	630.829	580.013
25	973.009	941.582	906.352	866.459	821.906	768.886	714.673	657.257	595.843	535.541
30	958.015	924.895	888.134	845.784	797.854	740.428	680.881	617.273	549.005	483.031
35	913.634	878.995	840.878	797.426	747.966	690.958	627.779	561.377	490.824	422.637
40	840.878	804.627	765.245	721.619	671.231	617.018	555.441	490.987	422.637	357.847
45	745.171	706.717	666.988	624.393	576.535	524.443	469.475	411.203	350.982	292.373
50	632.186	594.997	556.124	514.957	473.117	427.043	373.687	331.418	280.265	233.764
55	515.386	481.338	446.189	410.193	372.157	336.753	296.861	257.315	217.168	182.274
60	404.175	371.902	347.432	317.954	288.823	258.162	227.072	196.585	167.280	140.515
65	306.857	284.417	261.375	238.588	216.403	193.871	169.738	147.288	125.603	105.621
70	221.738	205.306	188.537	172.105	156.009	139.832	122.981	106.804	90.882	78.346
75	148.135	137.037	126.205	114.770	104.091	93.340	81.988	71.227	60.731	51.500
80	86.302	79.611	72.757	66.320	59.966	53.530	46.920	40.484	34.384	29.305
85	39.127	35.659	32.099	28.795	25.490	22.195	18.972	15.841	13.301	11.353
90	0.000	0.000	0.000	0.000	0.000	0.000	0.000	0.000	0.000	0.000

Vert. Horizontal Angles

	<u>100</u>	<u>105</u>	<u>110</u>	<u>115</u>	<u>120</u>	<u>125</u>	<u>130</u>	<u>135</u>	<u>140</u>	<u>145</u>
0	682.084	682.084	682.084	682.084	682.084	682.084	682.084	682.084	682.084	682.084
5	656.574	644.630	633.114	622.526	611.347	601.606	592.375	583.736	575.943	568.579
10	620.150	595.588	571.027	548.250	525.290	505.900	487.346	470.067	455.165	441.527
15	577.810	541.467	506.063	473.627	442.037	415.191	391.048	369.107	350.564	334.560
20	531.644	484.214	440.344	401.635	365.129	335.570	309.652	286.957	268.321	251.807
25	476.932	424.330	375.799	334.978	297.707	268.240	243.760	223.013	206.662	193.106
30	419.587	364.364	315.496	275.441	240.536	214.118	193.106	176.001	163.210	152.878
35	358.948	305.500	259.508	223.513	194.126	171.768	155.336	142.290	132.804	125.348

IES INDOOR REPORT
PHOTOMETRIC FILENAME : VODE_107_BX_SO_359_A1.IES

CANDELA TABULATION - (Cont.)

40	298.727	250.532	210.559	180.489	156.519	139.669	127.296	117.647	110.874	105.621
45	242.995	202.511	169.993	146.360	127.724	115.107	105.958	98.930	94.013	90.035
50	194.126	161.354	136.282	118.320	104.428	95.115	88.250	83.171	79.448	76.735
55	152.459	127.643	109.007	95.452	85.211	78.346	73.175	69.197	66.402	64.199
60	117.728	99.603	86.221	76.571	68.779	63.526	59.548	56.498	54.376	52.601
65	89.525	79.274	67.085	59.711	54.121	50.143	47.093	44.717	43.024	41.667
70	65.637	56.753	49.552	44.380	40.576	37.607	35.323	33.629	32.354	31.334
75	44.299	38.536	34.048	30.488	27.866	25.918	24.480	23.205	22.358	21.685
80	25.408	22.277	19.819	17.870	16.432	15.331	14.484	13.811	13.301	12.872
85	9.996	8.976	8.129	7.456	6.946	6.518	6.273	6.018	5.926	5.845
90	0.000	0.000	0.000	0.000	0.000	0.000	0.000	0.000	0.000	0.000

Vert. Horizontal Angles

	<u>150</u>	<u>155</u>	<u>160</u>	<u>165</u>	<u>170</u>	<u>175</u>	<u>180</u>
0	682.084	682.084	682.084	682.084	682.084	682.084	682.084
5	562.306	557.226	552.901	549.433	546.975	545.363	544.772
10	429.920	420.097	412.304	405.960	401.635	398.922	397.912
15	320.831	309.743	300.931	293.903	289.068	286.192	285.263
20	239.190	229.021	220.973	214.628	210.559	207.845	207.172
25	182.274	174.134	168.127	163.384	160.252	158.304	157.702
30	144.922	139.077	134.671	131.284	129.081	127.898	127.388
35	119.850	115.780	112.730	110.527	108.926	108.079	107.906
40	101.725	98.930	96.727	95.115	94.187	93.503	93.167
45	87.159	85.119	83.936	82.834	82.069	81.559	81.478
50	74.623	73.012	71.828	70.890	70.472	70.043	69.962
55	62.587	61.404	60.476	59.792	59.374	59.119	59.119
60	51.245	50.398	49.633	49.123	48.705	48.532	48.450
65	40.576	39.892	39.301	38.872	38.627	38.454	38.281
70	30.580	29.988	29.478	29.141	28.886	28.795	28.795
75	21.094	20.665	20.410	20.155	19.992	19.819	19.819
80	12.617	12.362	12.199	12.107	12.026	11.944	11.863
85	5.845	5.763	5.763	5.763	5.671	5.671	5.763
90	0.000	0.000	0.000	0.000	0.000	0.000	0.000

IES INDOOR REPORT
PHOTOMETRIC FILENAME : VODE_107_BX_SO_359_A1.IES

ZONAL LUMEN SUMMARY

Zone	Lumens	%Lamp	%Fixt
0-20	249.68	N.A.	14.10
0-30	531.17	N.A.	30.00
0-40	866.91	N.A.	49.00
0-60	1464.66	N.A.	82.70
0-80	1742.69	N.A.	98.50
0-90	1770.07	N.A.	100.00
10-90	1705.51	N.A.	96.40
20-40	617.22	N.A.	34.90
20-50	946.92	N.A.	53.50
40-70	779.54	N.A.	44.00
60-80	278.03	N.A.	15.70
70-80	96.23	N.A.	5.40
80-90	27.38	N.A.	1.50
90-110	0.00	N.A.	0.00
90-120	0.00	N.A.	0.00
90-130	0.00	N.A.	0.00
90-150	0.00	N.A.	0.00
90-180	0.00	N.A.	0.00
110-180	0.00	N.A.	0.00
0-180	1770.07	N.A.	100.00

Total Luminaire Efficiency = N.A.%

ZONAL LUMEN SUMMARY

Zone	Lumens
0-10	64.56
10-20	185.12
20-30	281.49
30-40	335.74
40-50	329.70
50-60	268.05
60-70	181.80
70-80	96.23
80-90	27.38
90-100	0.00
100-110	0.00
110-120	0.00
120-130	0.00
130-140	0.00
140-150	0.00
150-160	0.00
160-170	0.00
170-180	0.00

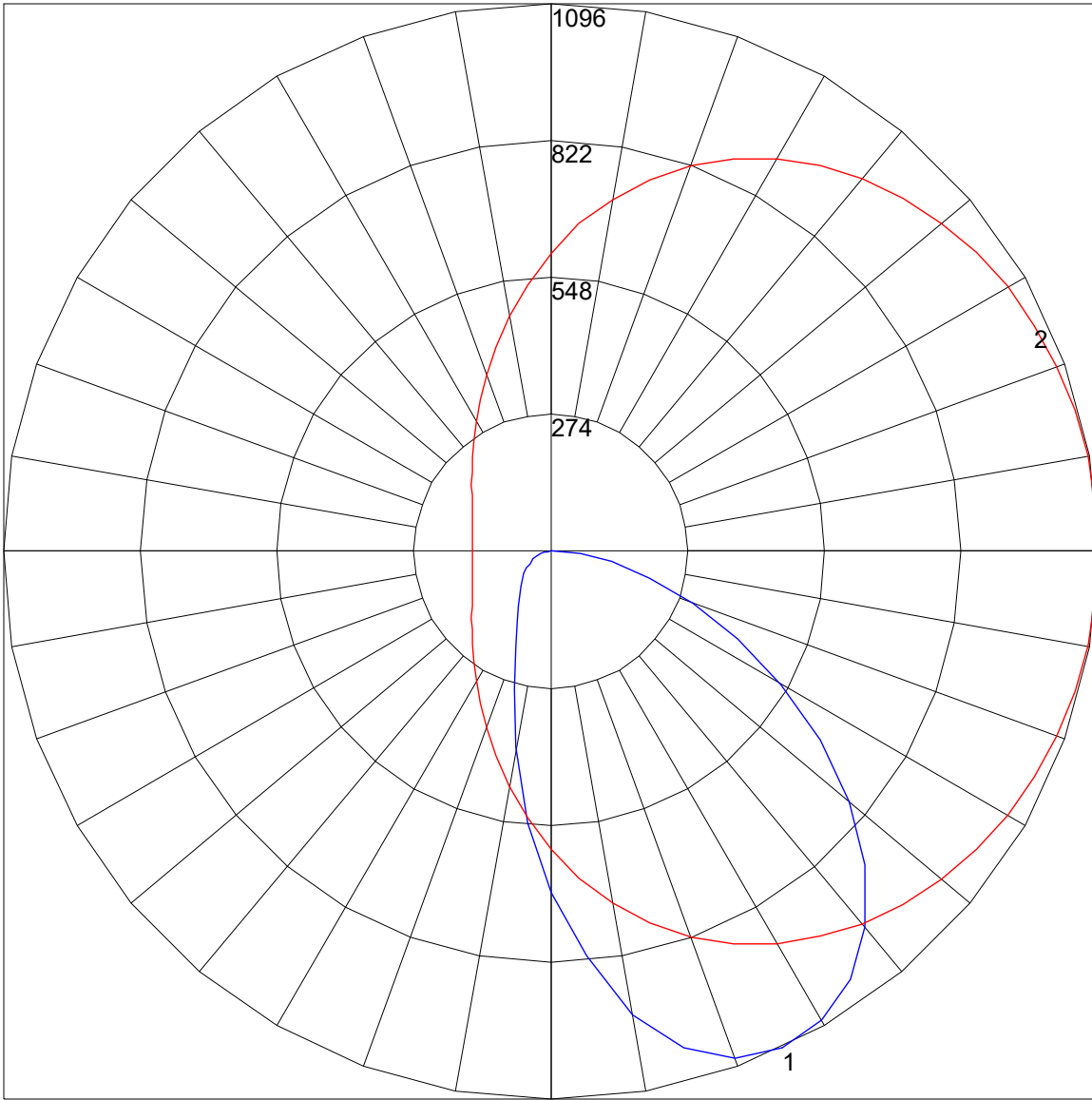
IES INDOOR REPORT
PHOTOMETRIC FILENAME : VODE_107_BX_SO_359_A1.IES

COEFFICIENTS OF UTILIZATION - ZONAL CAVITY METHOD

Effective Floor Cavity Reflectance 0.20

RC	80				70				50			30			10			0	
	RW	70	50	30	10	70	50	30	10	50	30	10	50	30	10	50	30	10	0
0	119	119	119	119	119	116	116	116	116	111	111	111	106	106	106	102	102	102	100
1	109	105	101	97	96	107	103	99	96	98	95	93	94	92	90	91	89	87	85
2	100	92	86	80	77	97	90	84	79	87	82	77	83	79	76	80	77	74	72
3	91	81	74	67	64	89	80	73	67	77	71	65	74	69	64	72	67	63	61
4	84	72	64	57	54	82	71	63	57	69	62	56	66	60	56	64	59	55	53
5	77	65	56	50	47	75	64	56	50	62	55	49	60	53	48	58	52	48	46
6	72	59	50	44	41	70	58	49	43	56	49	43	54	48	43	53	47	42	40
7	66	53	45	39	36	65	52	44	39	51	44	38	50	43	38	48	42	38	36
8	62	49	40	35	32	60	48	40	35	47	39	34	45	39	34	44	38	34	32
9	58	45	37	31	28	57	44	36	31	43	36	31	42	35	31	41	35	31	29
10	54	41	34	28	25	53	41	33	28	40	33	28	39	33	28	38	32	28	26

POLAR GRAPH



Maximum Candela = 1096.327 Located At Horizontal Angle = 0, Vertical Angle = 25
1 - Vertical Plane Through Horizontal Angles (0 - 180) (Through Max. Cd.)
2 - Horizontal Cone Through Vertical Angle (25) (Through Max. Cd.)